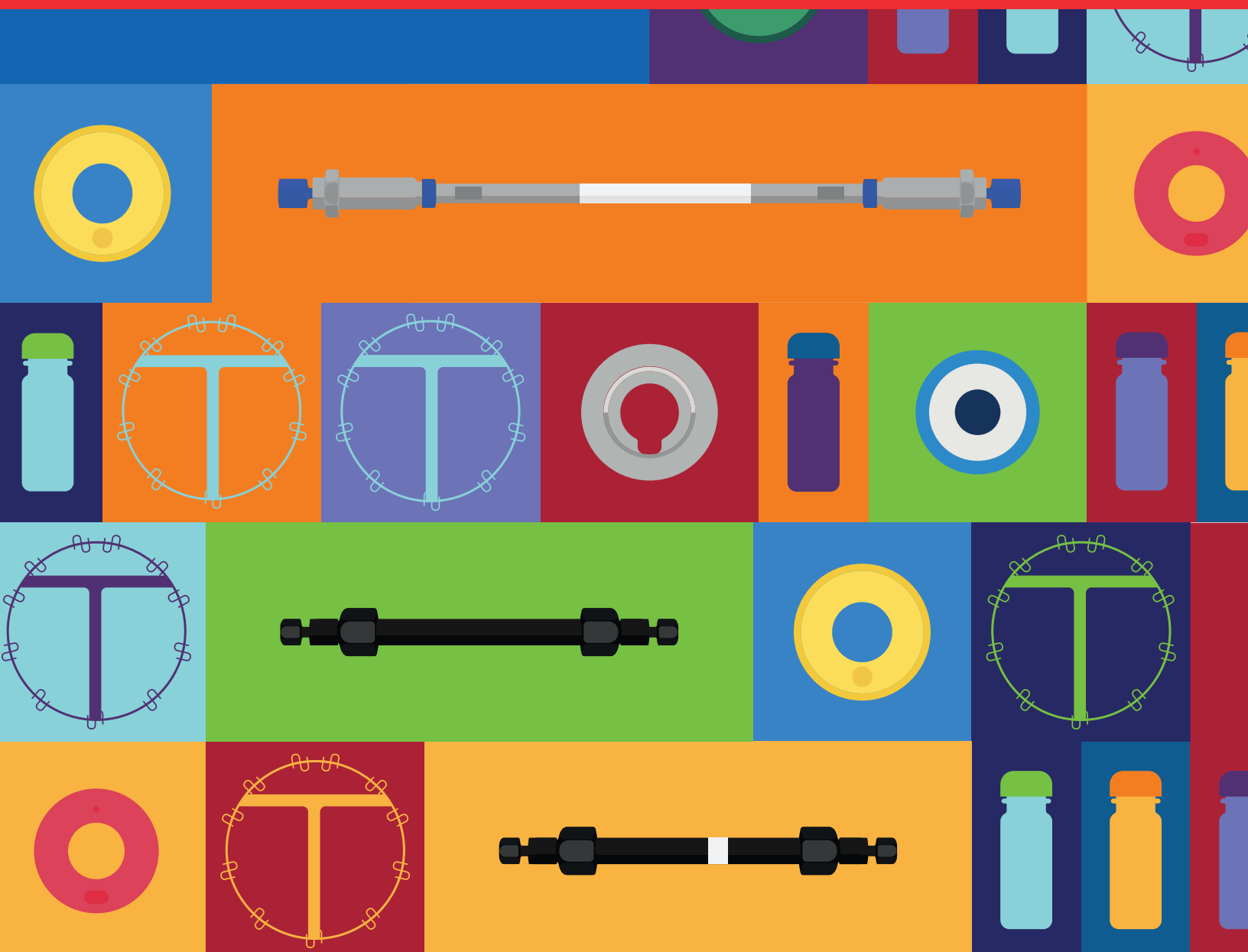


thermo scientific



Connected chromatography solutions

2019/2021 Chromatography Consumables Catalog

ThermoFisher
SCIENTIFIC

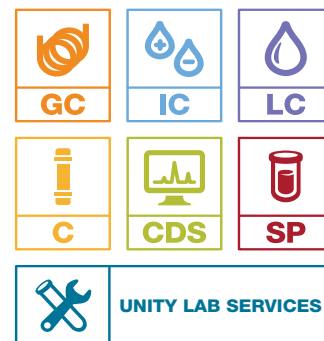


The collective power of chromatography

Expect reproducible results with sample prep, columns and vials

Maximizing your chromatography productivity and achieving reproducible results requires optimizing the whole workflow from sample to knowledge. By choosing the right tools, from your sample preparation (manual or automated) to the highest selectivity column chemistry and cleanest vials, you maintain sample integrity and achieve the highest instrument efficiency and reduce the need for costly reanalysis. With the largest portfolio of sample handling; vials, plates and closures, column chemistries in a broad range of dimensions and sample preparation, we remain a steadfast and committed partner in your endeavor to improve the world around us.

Find out more at thermofisher.com/chromatographyconsumables



ThermoFisher
SCIENTIFIC

2019/2021 Chromatography Consumables Catalog

This PDF catalogue is designed to familiarise you with our comprehensive portfolio of Chromatography consumables, columns and accessories, designed to deliver connected chromatography solutions across Biopharma/Pharma, Food & Beverage, Environmental and Clinical workflows. We have included key workflows in the next few pages to help with your product selection.

How to use this PDF catalog

You can use the 'ctrl F' function to search for products, applications, brands or part numbers, or you can navigate by section using the contents page to guide you.

More information

For more information on Chromatography consumables, to access application notes, educational resources, selection guides and product literature, please visit thermofisher.com/chromatographyconsumables

Or, for more information on our Instrumentation and key applications, please visit thermofisher.com/chromatography

AppsLab

Gain access to our applications expertise on cloud-based Thermo Scientific™ AppsLab library of analytical applications for a comprehensive fully searchable method repository.

Visit appslab.thermofisher.com

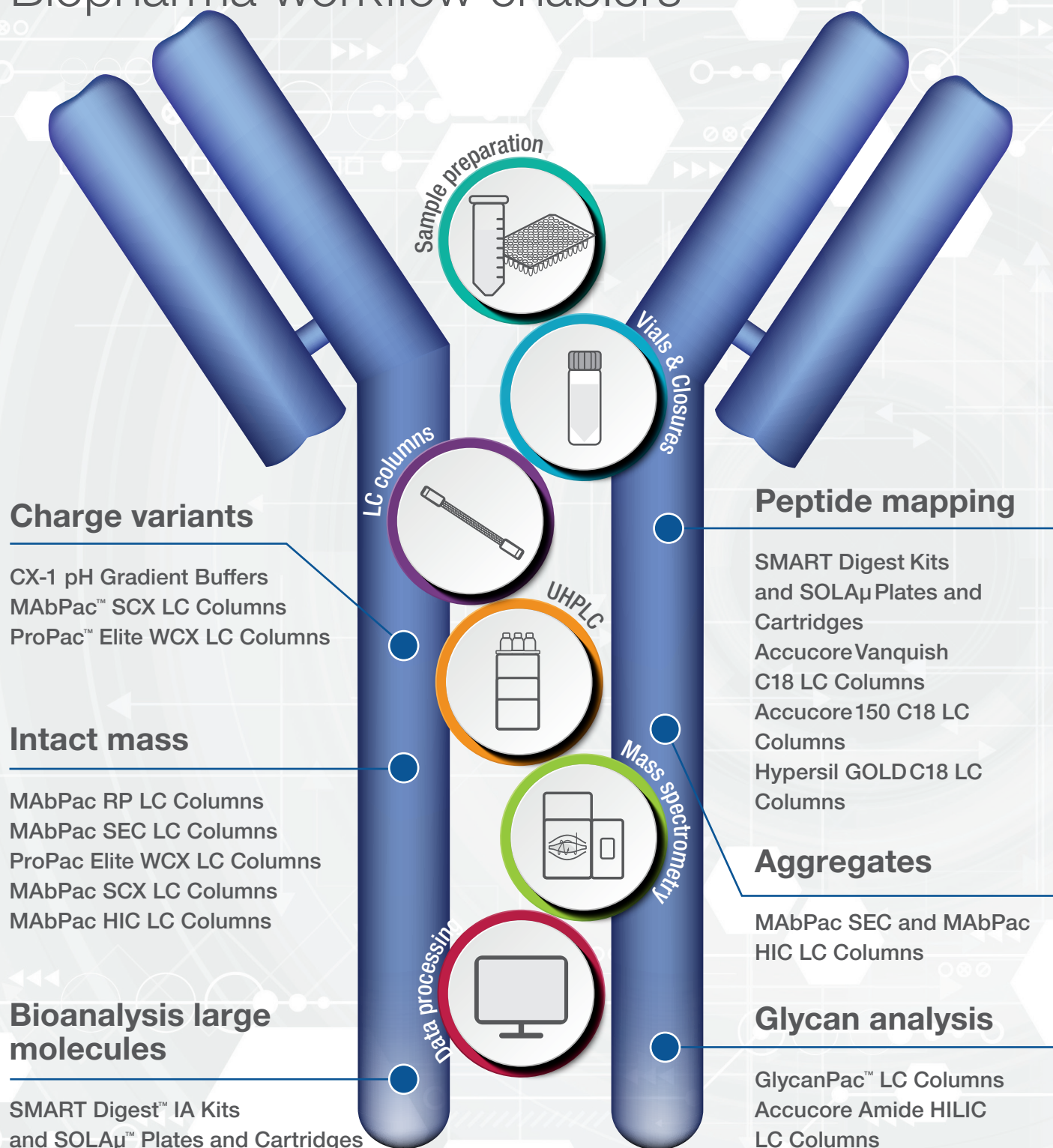
A collaboration built for Biopharma

The National Institute for Bioprocessing Research and Training (NIBRT) and Thermo Fisher Scientific are developing workflows using Thermo Fisher Scientific technology including the latest biomolecule columns.

For more information on collaboration built for BioPharma visit

thermofisher.com/NIBRT

Thermo Scientific™ Biopharma workflow enablers



Find out more about consumables for your Biopharma workflow [here](#)

Thermo Scientific™ Pharmaceutical workflow enablers

Small molecules

Discovery DMPK

HyperSep™ SPE Cartridges and Plates
WebSeal™ Well Plates and Mats
Accucore™ RP-MS LC Columns
Accucore Biphenyl LC Columns
Acclaim™ VANQUISH™ C18 UHPLC Columns
Titan3™ Syringe Filters

Development DMPK / Pre Clinical

SOLA™/SOLAμ™ SPE Plates and Cartridges
WebSeal Well Plates and Mats
HyperSep SPE Cartridges and Plates
Accucore C18 LC Columns
Accucore Biphenyl LC Columns
Hypersil GOLD™ VANQUISH™ C18 UHPLC Columns

Clinical

SOLA/SOLAμ SPE Plates and Cartridges
WebSeal Well Plates and Mats
Hypersil GOLD VANQUISH C18 UHPLC Columns
Accucore C18 LC Columns
Accucore Biphenyl LC Columns

QA/QC

Titan3 Syringe Filters
Hypersil GOLD C18 UHPLC Columns
Accucore RP-MS LC Columns
Accucore Biphenyl LC Columns
TraceGOLD™ GC Columns

Large molecules

Discovery DMPK

SMART Digest™ Kits
WebSeal Well Plates and Mats
MAbPac™ LC Columns
ProPac™ Elite WCX LC Column
GlycanPac™ LC Columns
Acclaim 120 C18 Columns
CX-1 pH Gradient Buffers

Development DMPK / Pre Clinical

SMART Digest & SMART Digest ImmunoAffinity Kit
SOLA/SOLAμ SPE Plates and Cartridges
WebSeal Well Plates and Mats
Acclaim 120 C18 Columns

Clinical

SOLA/SOLAμ SPE Plates and Cartridges
WebSeal Well Plates and Mats
Acclaim 120 C18 Columns

QA/QC

Titan3 Syringe Filters
SMART Digest Kits
ProPac LC Columns
MAbPac LC Columns
CX-1 pH Gradient Buffers
Acclaim 120 C18 Columns



Thermo Scientific™ Food and Beverage workflow enablers

Pesticides

HyperSep™ SPE Cartridges
 QuEChERS
 TraceGOLD™ GC Columns
 GC Consumables
 and Accessories
 Accucore™ aQ LC Columns
 Acclaim™ Carbamate
 LC Columns
 Acclaim Trinity Q1 LC Columns

Mycotoxins

HyperSep Retain Cartridges
 Accucore aQ LC Columns
 Hypersil GOLD™ LC Columns

Contaminants by GC-MS

HyperSep SPE Cartridges
 TraceGOLD GC Columns
 GC Consumables and
 Accessories



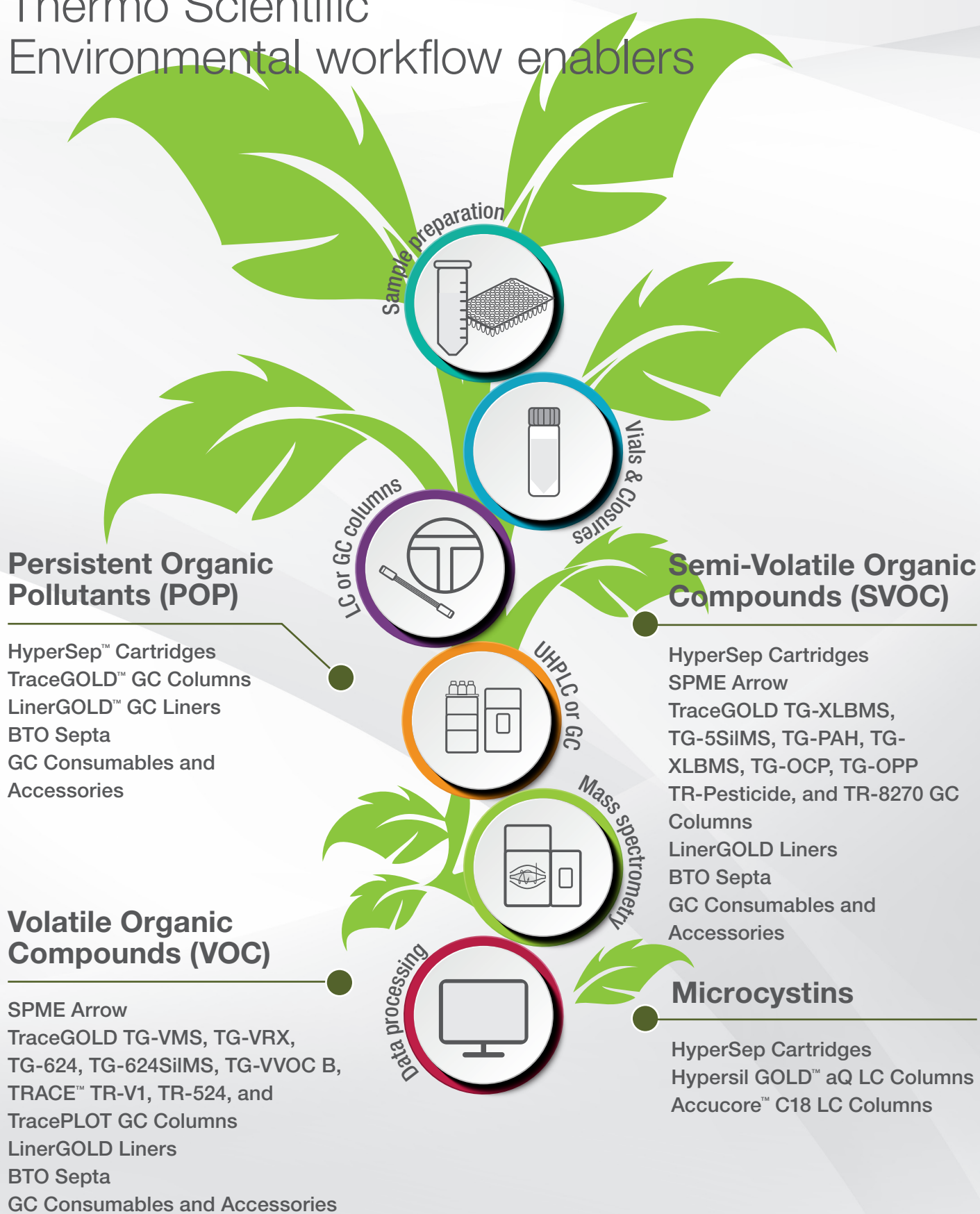
Veterinary drug residues

QuEChERS
 Target2™ PTFE Syringe
 Filters
 Accucore VDX LC Columns

Food quality/ Food labelling / Food fraud

HyperSep Retain Cartridges
 HyperSep SPE Cartridges
 Acclaim LC Columns
 Accucore LC Columns
 HyperREX™ LC Columns
 GC Columns and
 Consumables

Thermo Scientific™ Environmental workflow enablers



Thermo Scientific™ Clinical research workflow enablers

Forensic toxicology

SOLA™/SOLA μ ™ SPE Plates and Cartridges
HyperSep™ SPE Cartridges and Plates
HyperSep™ Retain Cartridges
Accucore™ Biphenyl LC Columns
Accucore RP-MS LC Columns
TraceGOLD™ GC Columns and Guard Columns

Drugs of abuse research

SOLA/SOLA μ SPE Plates and Cartridges
HyperSep Verify CX Cartridges
Accucore Biphenyl LC Columns
Hypersil GOLD™ LC Columns
TraceGOLD GC Columns

Supplement analysis

HyperSep Retain Cartridges and Plates
Hypercarb™ HPLC and UHPLC Columns
Hypersil GOLD PFP LC Columns
Accucore aQ C18 LC Columns

Amino acids, acylcarnitines, and succinylacetone research

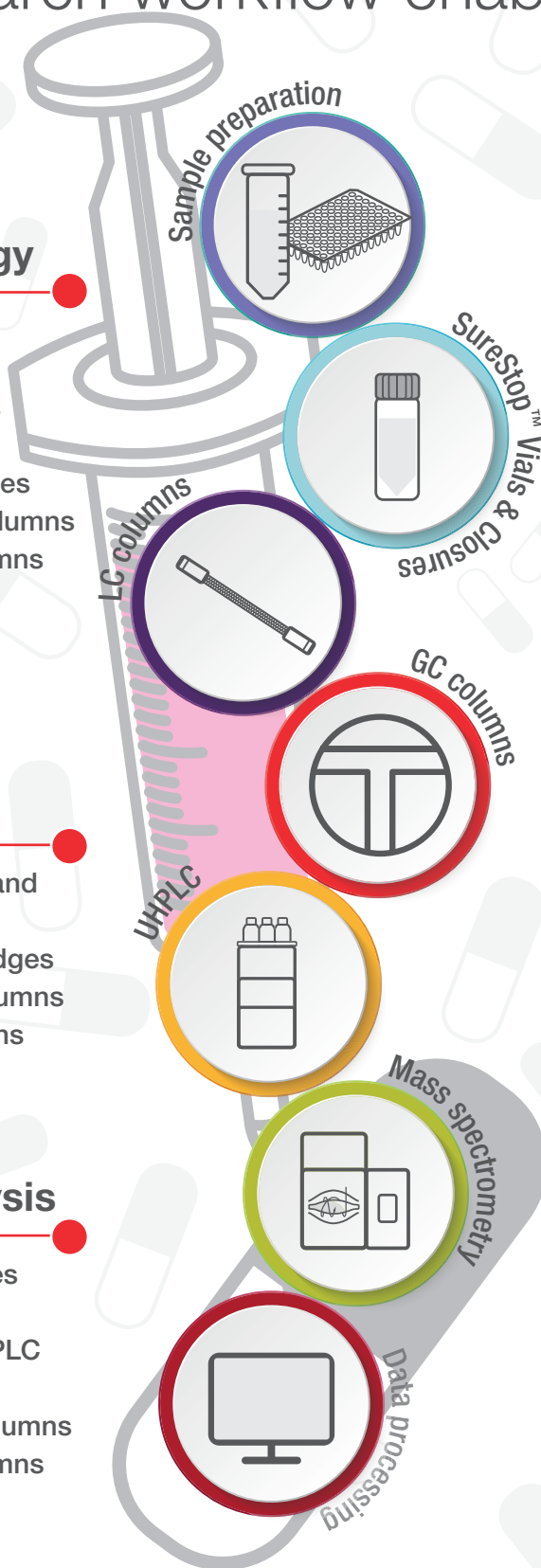
Hypersil GOLD C18 LC Columns
Accucore aQ C18 LC Columns
Acclaim™ HILIC LC Columns
Titan3™ Syringe Filters
HyperSep SLE Plates and Cartridges
TraceGOLD GC Columns

Translational proteomics

SMART Digest™ Kits
SOLA μ SPE Plates and Cartridges
EASY-Spray™ LC Columns
PepMap™ RSLC Columns
WebSeal™ Well Plates and Mats

Drug monitoring research

SOLA/SOLA μ SPE Plates and Cartridges
WebSeal Well Plates and Mats
Acclaim 120 C18 Columns



Sample preparation products

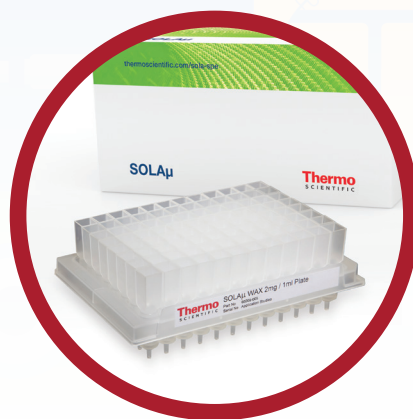
Your sample is precious and you cannot afford failures. We have a comprehensive range of products delivering clean and consistent extractions using innovative sample preparation technologies for your analytical needs.

Featured products



SMART Digest Kits

Thermo Scientific™ SMART Digest™ kits are designed for biopharmaceutical applications that require highly reproducible, sensitive and fast analyses of proteins often in high throughput workflows.



SOLA products

The first fritless SPE product range which has been specifically designed for bioanalysis provides greater reproducibility with cleaner, more consistent extracts. Thermo Scientific™ SOLA™ products provide unparalleled performance characteristics compared to conventional SPE, phospholipid removal and protein precipitation methods.

Section contents

SMART Digest kits	1-003
SOLA SPE products	1-008
HyperSep protein precipitation plate	1-014
Microscale SPE plates and tips	1-015
HyperSep SPE cartridges and plates	1-017
SPE manifolds and accessories	1-026
HyperSep Dispersive SPE (QuEChERS)	1-031
Syringes and filters	1-035



QuEChERS products

A quick and easy sample preparation approach for pesticide analysis. Convenient extraction and clean-up of pesticides in food and other complex matrices.

Page 1-035



Syringe filters

Provides cleaner sample extracts by removing interfering materials and fine particles.

Page 1-031

SMART Digest and SMART Digest ImmunoAffinity (IA) kits

Facilitating perfect digestion

The Thermo Scientific™ SMART Digest™ and the SMART Digest™ ImmunoAffinity (IA) kits are designed for biomarker and bio-therapeutic characterization and quantitation. The kits deliver sample preparation of proteins that are:

- Fast
- Simple
- Highly reproducible
- Sensitive
- Compatible with automation



SMART Digest kits

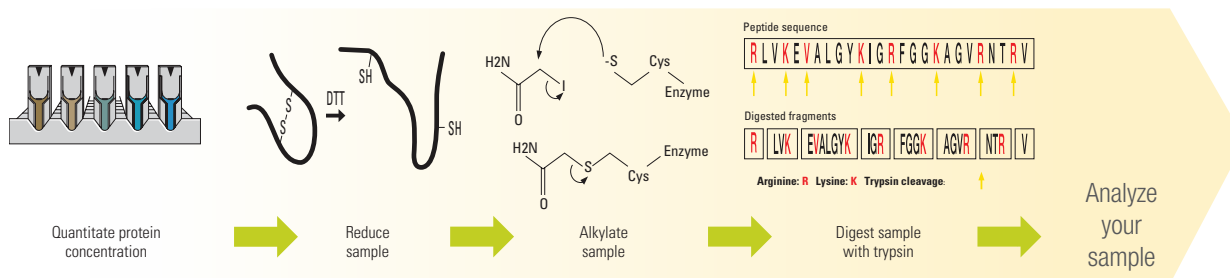
The SMART Digest kits improve workflows by quickly and efficiently digesting proteins for characterization and quantitation applications, achieved due to the heat-stable immobilized trypsin design.

Simplicity of use with SMART Digest kits

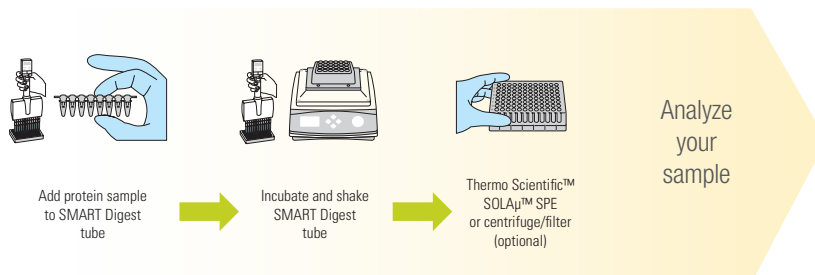
Current sample preparation protocols for the digestion of proteins are multifaceted and laborious. Without a single source solution, errors are far more likely to occur. Therefore, the overall protocol is subject to irreproducibility and significant sample processing time.

The SMART Digest kit overcomes these barriers by providing a simple to implement, integrated process (see the diagram below), which provides high data confidence and significantly increased reproducibility. The entire protocol can be easily automated for high throughput processing.

Standard Digest

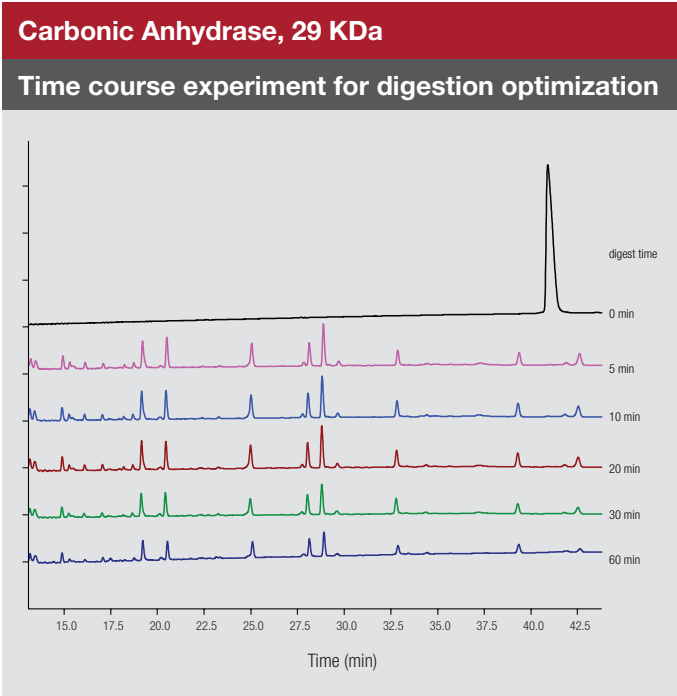


SMART Digest



Fast digestion with SMART Digest kits

The SMART Digest process is not only simple, but significantly reduces the time from sample preparation to analysis. Typically it takes less than 60 minutes, dependent on sample complexity, to achieve full digestion as can be seen in the IgG example below with full digestion achieved in 60 minutes.

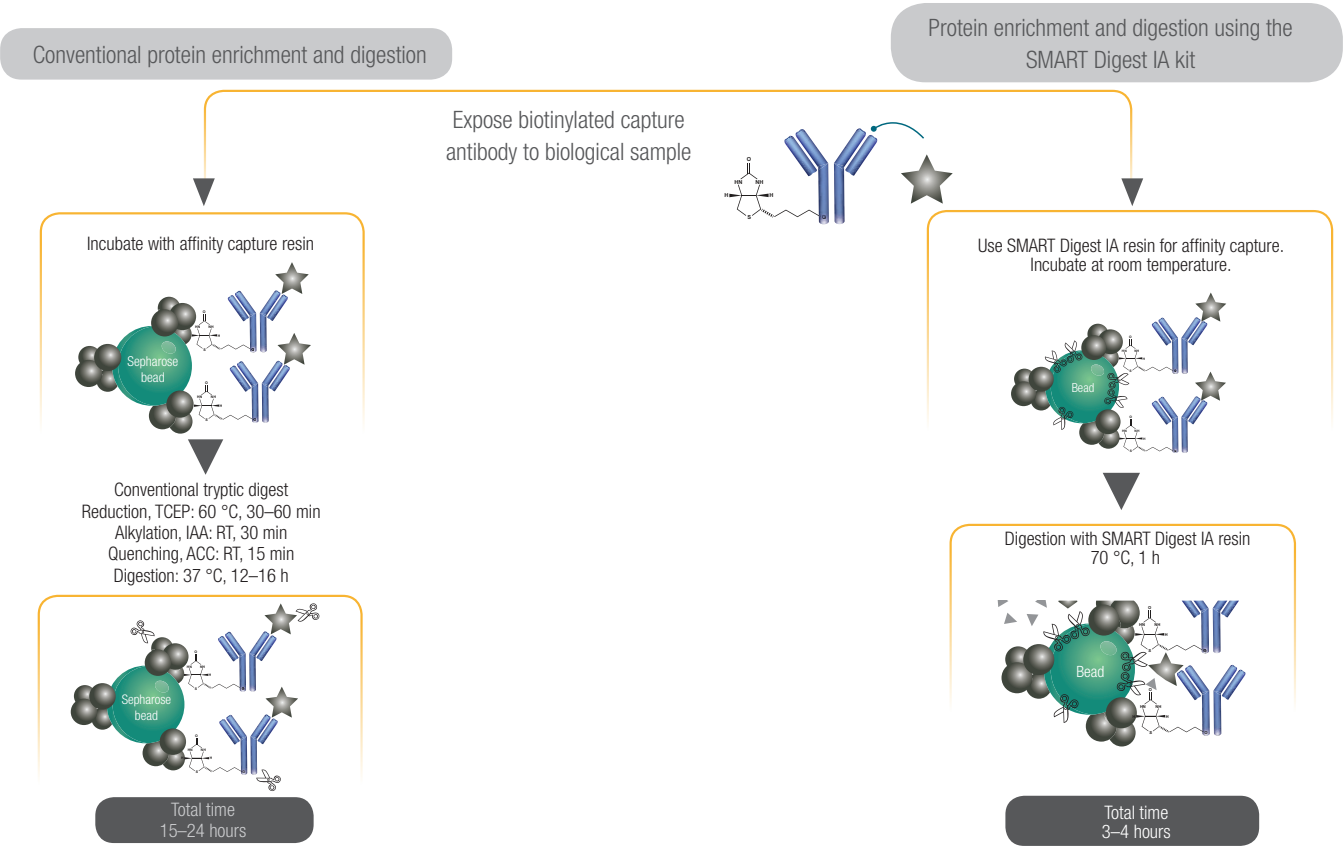


Typical Digestion Times

Protein	Digest Time (min)
Insulin	4
BSA	< 5
Carbonic anhydrase	< 5
Lysozyme	< 5
Apo-B	30
IgG	45
IgG in 50 μ L plasma*	75
Ribonuclease A	150
Thyroglobulin	240
C-reactive protein	240

200 μ L protein solution (100 μ g/mL) at 70 °C
 *IgG in plasma (17.5 mg/mL total protein) at 70 °C

How does the SMART Digest IA kit work?



SMART Digest IA kits

Part Number	Description
60110-101	SMART Digest IA Kit, Streptavidin (Av) non-magnetic
60110-102	SMART Digest IA Kit, Av non-magnetic with SOLA μ SPE and collection plate
60110-103	SMART Digest IA Kit, Av magnetic with SOLA μ SPE and collection plate
60110-104	SMART Digest IA Kit, Av magnetic
60111-101	SMART Digest IA Kit, Protein A non-magnetic
60111-102	SMART Digest IA Kit, Protein A non-magnetic with SOLA μ SPE and collection plate
60111-103	SMART Digest IA Kit, Protein A magnetic with SOLA μ SPE and collection plate
60111-104	SMART Digest IA Kit, Protein A magnetic
60112-101	SMART Digest IA Kit, Protein G non-magnetic
60112-102	SMART Digest IA Kit, Protein G non-magnetic with SOLA μ SPE and collection plate
60112-103	SMART Digest IA Kit, Protein G magnetic with SOLA μ SPE and collection plate
60112-104	SMART Digest IA Kit, Protein G magnetic

Automation

Due their simple workflow, SMART Digest and SMART Digest IA kits are easy to automate with platforms such as the Thermo Scientific™ KingFisher™ DUO Prime purification system



A step change in protein affinity capture and digestion

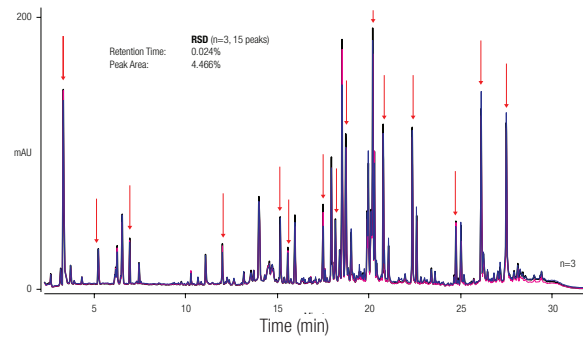
SMART Digest and SMART Digest IA kits provide a significant change in protein sample preparation, by delivering workflows that are:

- Significantly faster
- Easier to use
- Highly reproducible
- Sensitive
- Compatible with automation

Reproducibility of digestion with the SMART Digest kits

The SMART Digest kit provides significant improvements in reproducibility over existing protocols, which results in fewer sample failures, higher throughput and the ability to more easily interrogate data.

This allows for reproducible results user-to-user, day-to-day and lab-to-lab. The UV chromatogram on the right shows overlay from three separate SMART digestions from the same mAb, conducted by three individual operators, with retention time RSD's of 0.024%.



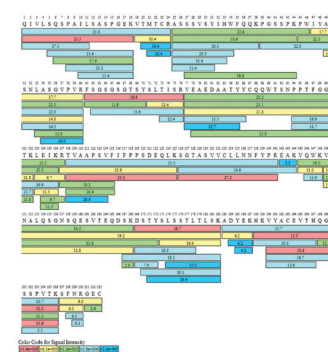
Characterization

The SMART Digest kit, in combination with the High Resolution Accurate Mass (HRAM) capabilities of the Thermo Scientific™ Q Exactive™ mass spectrometers, and high resolution chromatographic separation with the Thermo Scientific™ Vanquish™ UHPLC family provides us with high-quality data sets that can be more effectively interrogated with Thermo Scientific™ BioPharma Finder™ Software.

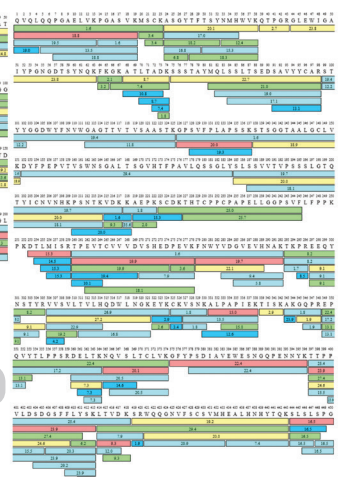
Quantitation

The SMART Digest kit allows confident detection of biomarkers with high sensitivity within a wide dynamic range, as can be seen below with the example of Thyroglobulin. Greater sensitivity is achieved in 3.5 hours compared to an in-solution digest protocol taking 20 hours to complete.

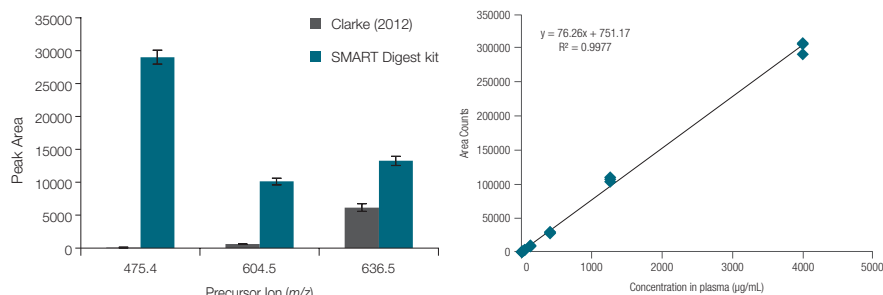
Rituximab light chain



Rituximab heavy chain



Sequence coverage ~100%



Measurement of serum Thyroglobulin after tryptic digestion of serum samples.

- SMART Digest kit: 25% plasma, 3.5 h digestion
 - In-solution digest: 20% plasma, R/A, 4 + 16 h digestion
- Clarke et al. (2012), J. Investigative Medicine, 60(8)

Calibration curve for thyroglobulin signature peptide in murine plasma (4–4000 µg/mL).

SMART Digest Kits

Description	Cat. No.
SMART Digest Kit Trypsin and collection plate	60109-101
SMART Digest Kit Trypsin, filter/collection plate	60109-102
SMART Digest Kit Trypsin, SOLAµ/collection plate	60109-103

SMART Digest ImmunoAffinity (IA) kits

The SMART Digest IA kits have all the advantages previously outlined for fast, easy and reproducible protein digestion for quantitation and characterization applications with the added advantage of combining an immunocapture and digestion process into a single well.

This has significant benefits for quantitation studies where immunoaffinity capture is typically employed to increase sensitivity by purifying low-level proteins from complex biological matrices. This step is then followed by protein digestion.

The SMART Digest IA kits achieve this due to their unique design where the immunoaffinity reagents (either streptavidin, protein A or protein G) and heat activated thermally stable trypsin are co-immobilized onto a single bead. Following the binding of a capture reagent to the bead, and enrichment of the target, the enzyme is activated at elevated temperatures for accelerated digestion under protein denaturing conditions. The resulting workflow is as easy as enrich, wash and digest. Magnetic and non-magnetic versions of the beads are available.

Ordering information

Part Number	Description
SMART Digest Kits	
60109-101	SMART Digest Kit Trypsin and collection plate
60109-101-B	SMART Digest Kit Trypsin, bulk resin option
60109-101-MB	SMART Digest Kit Trypsin, magnetic bulk resin option
60109-102	SMART Digest Kit Trypsin, filter/collection plate
60109-102-B	SMART Digest Kit Trypsin, bulk resin option with filter/collection plate
60109-102-MB	SMART Digest Kit Trypsin, magnetic bulk resin option with filter/collection plate
60109-103	SMART Digest Kit Trypsin, SOLAµ/collection plate
60109-103-B	SMART Digest Kit Trypsin, bulk resin option with SOLAµ/collection plate
60109-103-MB	SMART Digest Kit Trypsin, magnetic bulk resin option with SOLAµ/collection plate
60113-101	SMART Digest Kit Soluble Trypsin and collection plate
60109-104	SMART Digest Kit Chymotrypsin and collection plate
60109-104-B	SMART Digest Kit Chymotrypsin, bulk resin option
60109-104-MB	SMART Digest Kit Chymotrypsin, magnetic bulk resin option
60109-105	SMART Digest Kit Chymotrypsin, filter/collection plate
60109-105-B	SMART Digest Kit Chymotrypsin, bulk resin option with filter/collection plate

Ordering information (continued)

Part Number	Description
SMART Digest Kits	
60109-105-MB	SMART Digest Kit Chymotrypsin, magnetic bulk resin option with filter/collection plate
60109-106	SMART Digest Kit Chymotrypsin, SOLA μ /collection plate
60109-106-B	SMART Digest Kit Chymotrypsin, bulk resin option with SOLA μ /collection plate
60109-106-MB	SMART Digest Kit Chymotrypsin, magnetic bulk resin option with SOLA μ /collection plate
60109-107	SMART Digest Kit Proteinase K and collection plate
60109-107-B	SMART Digest Kit Proteinase K, bulk resin option
60109-107-MB	SMART Digest Kit Proteinase K, magnetic bulk resin option
60109-108	SMART Digest Kit Proteinase K, filter/collection plate
60109-108-B	SMART Digest Kit Proteinase K, bulk resin option with filter/collection plate
60109-108-MB	SMART Digest Kit Proteinase K, magnetic bulk resin option with filter/collection plate
60109-109	SMART Digest Kit Proteinase K, SOLA μ /collection plate
60109-109-B	SMART Digest Kit Proteinase K, bulk resin option with SOLA μ /collection plate
60109-109-MB	SMART Digest Kit Proteinase K, magnetic bulk resin option with SOLA μ /collection plate

Part Number	Description
SMART Digest IA Kits	
60110-101	SMART Digest IA Kit, Streptavidin (Av) non-magnetic
60110-102	SMART Digest IA Kit, Av non-magnetic with SOLA μ SPE and collection plate
60110-103	SMART Digest IA Kit, Av magnetic with SOLA μ SPE and collection plate
60110-104	SMART Digest IA Kit, Av magnetic
60111-101	SMART Digest IA Kit, Protein A non-magnetic
60111-102	SMART Digest IA Kit, Protein A non-magnetic with SOLA μ SPE and collection plate
60111-103	SMART Digest IA Kit, Protein A magnetic with SOLA μ SPE and collection plate
60111-104	SMART Digest IA Kit, Protein A magnetic
60112-101	SMART Digest IA Kit, Protein G non-magnetic
60112-102	SMART Digest IA Kit, Protein G non-magnetic with SOLA μ SPE and collection plate
60112-103	SMART Digest IA Kit, Protein G magnetic with SOLA μ SPE and collection plate
60112-104	SMART Digest IA Kit, Protein G magnetic

Complementary products

Part Number	Description
60103-351	HyperSep Vacuum Manifolds, for HyperSep 96-Well Plates
60104-243	HyperSep Glass Block Vacuum Manifold Pumps (NA)
60104-241	HyperSep Glass Block Vacuum Manifold Pumps (EU)
60209-001	SOLA μ HRP SPE Plate
60109-102-F	SMART Digest Filter Plate
5400110	KingFisher Duo Prime Purification System
5400630	KingFisher Flex Purification System

Learn more at [thermofisher.com/smartdigest](https://www.thermofisher.com/smartdigest)

SOLA SPE products

Consistent excellence for bioanalysis

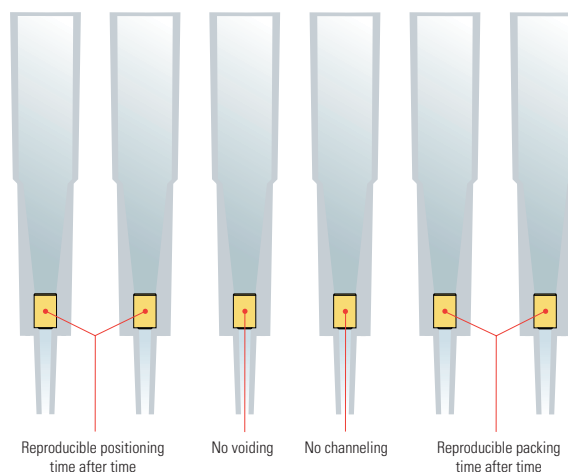


Thermo Scientific™ SOLA™ products are designed for bioanalytical and clinical research analysts who are tasked with providing high quality analytical results from complex biological samples in a high throughput environment, while complying with strict legislation. These demands are compounded by the continued push to higher efficacy drugs and long acting formulations which continue to drive sensitivity requirements to lower levels to enable accurate quantification.

In order to meet these demands, bioanalytical methods must provide:

- Robustness – low analytical failure rates
- Ability to process low sample volumes
- High sensitivity
- High reproducibility
- Ease of use
- High throughput processing
- Efficient and fast processes

The SOLA SPE range meets these demands due to the unique and innovative frit-less SPE technology which eliminates the issues with traditional loose-packed SPE formats (see figure to the right). Combining the support material and active media components into a solid, uniform sorbent bed provides stable and controllable flow through characteristics and has an added advantage when dealing with viscous biological samples, as it prevents blocking and enables high throughput processing.

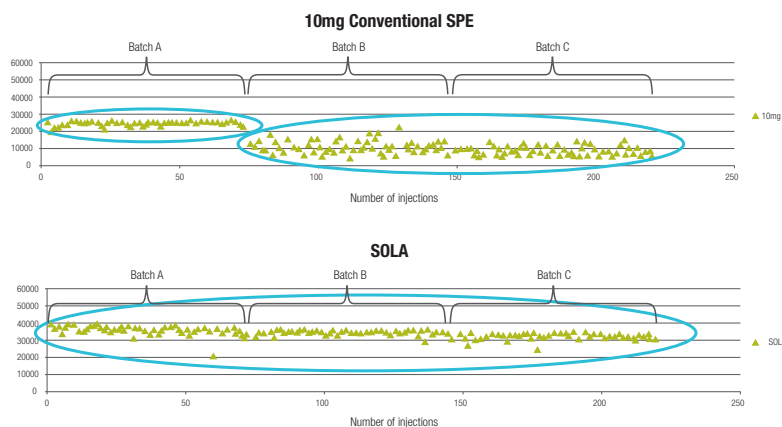


SOLAμ SPE fritless design – limiting issues associated with conventional SPE formats

The manufacturing process also allows for high levels of reproducibility, not only from cartridge-to-cartridge or well-to-well but also batch-to-batch (see figure to the right).

The Thermo Scientific™ SOLAμ™ SPE range has the added benefit of being able to provide:

- Up to a 20 fold increase in sensitivity
- Ability to process samples restricted in volume
- Increased workflow efficiency and sample integrity

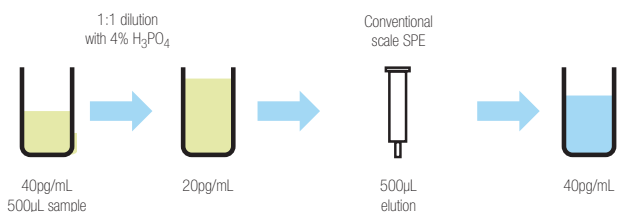


Batch to batch reproducibility of SOLA compared to a conventional SPE product

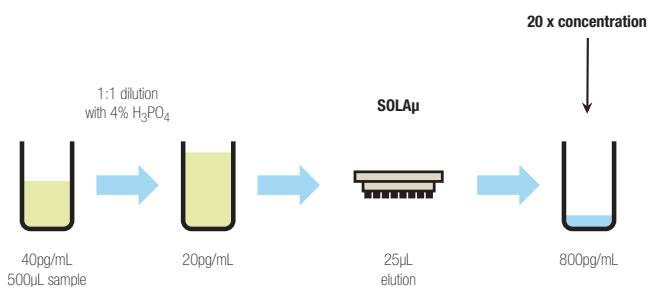
Increase your MS sensitivity

Up to 20 times increase in sensitivity can be achieved by loading a large volume of sample and eluting in a low volume.

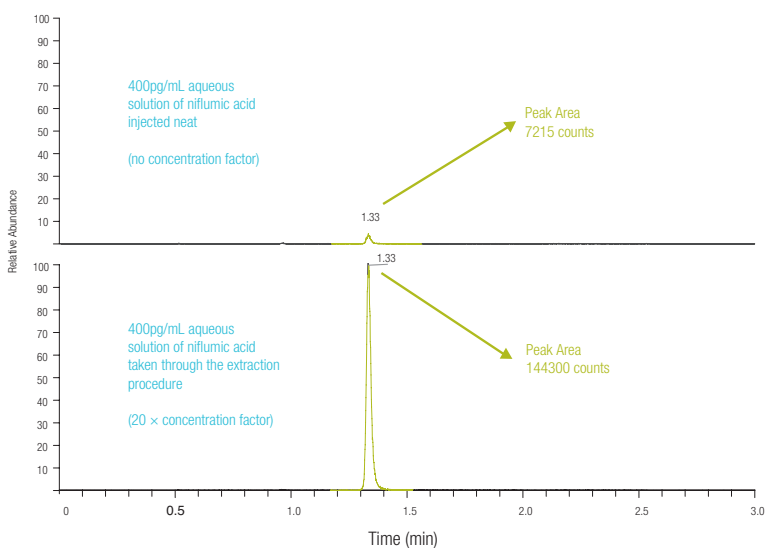
In the following example 500 μ L of human plasma was loaded onto the SOLA μ plate for the analysis of niflumic acid. The compound was eluted in 25 μ L, providing a 20 times increase in concentration whilst maintaining excellent precision.



The problem:
Improvement in
assay sensitivity
required



SOLA μ solution:
SOLA μ for up to 20 times
increase in concentration
of sample without
changes to workflow

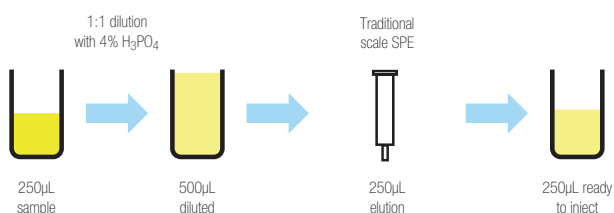


	Precision Data for Niflumic Acid Peak Area Ratio (%RSD) n = 18	Recovery of Niflumic Acid (%)	Matrix Effects (%)
QC Low (0.4ng/mL)	1.31	89.9	8.63
QC High (30ng/mL)	1.06	94.0	3.21

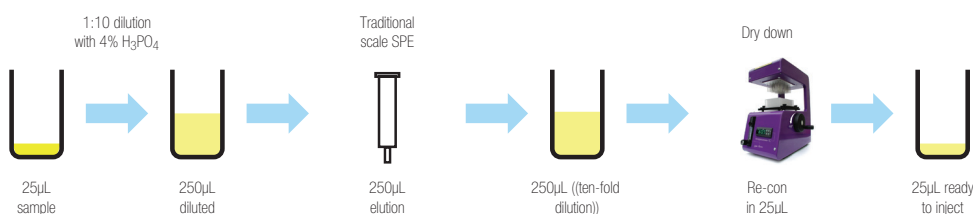
Sample limited assays

SOLA μ allows you to directly scale down the volumes used in analytical methods, allowing for a reduction in sample usage and eliminating issues caused by evaporation, without compromising the sensitivity of your assay. This is also an important consideration when sample volumes are limited.

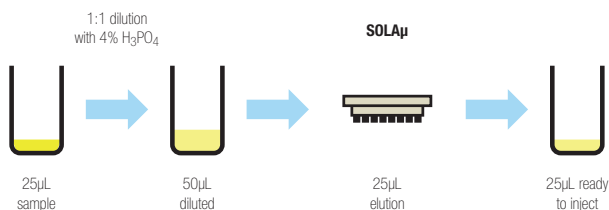
The following example shows that by loading 25 μ L of niflumic acid sample onto the SOLA μ plate and eluting in a total volume of 25 μ L, a ten-fold decrease in sample volume was achieved when compared to a traditional scale higher bed weight product. Equivalent method performance and high levels of reproducibility provided by SOLA technology were still maintained.



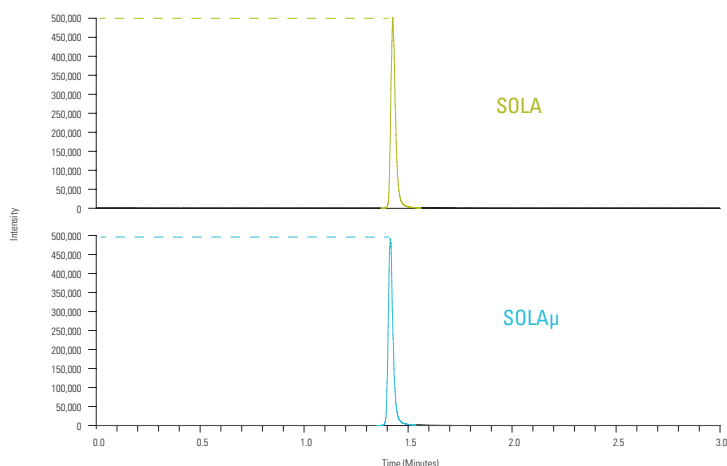
Problem:
Large sample volume requires reduction



Option 1:
Introduce additional steps with associated issues



Option 2:
Scale volumes directly with no other method changes



Equivalent peak response achieved for Niflumic Acid with SOLA μ using 25 μ L of sample compared with 250 μ L of sample with a 10x11 SOLA SPE device

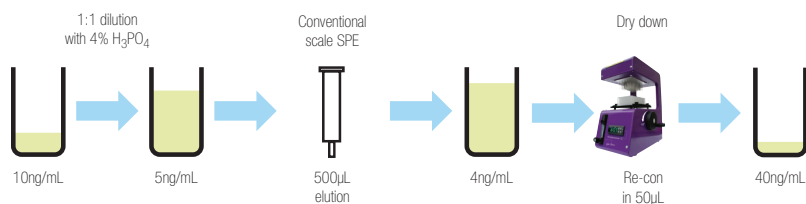
Precision Data for Niflumic Acid		
	Analyte Peak Area (%RSD)	Peak Area Ratio (%RSD)
Low QC	7.32	0.356
High QC	5.33	0.195

Increased workflow efficiency

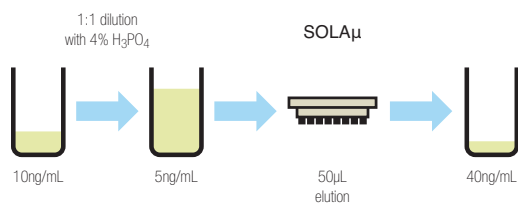
With traditional SPE the eluted sample is typically dried down to increase the concentration of the sample and thus improve the sensitivity. This causes an issue for certain compound types which can be lost during this step, resulting in reduced sensitivity.

SOLA μ allows the sample to be extracted without the need for dry down and reconstitution. Not only does this maximize recovery of the analytes it also improves workflow efficiency and increases productivity.

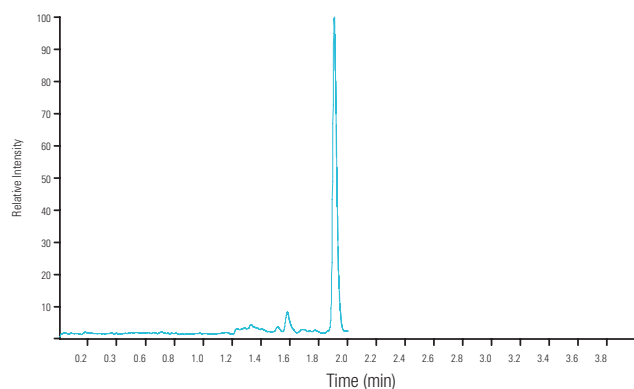
In the case of extraction of ibuprofen a four-fold pre-concentration was achieved without the need for dry down by loading 200 μ L of sample onto the SOLA μ plate and eluting in a total of 50 μ L. The results demonstrate that even with this low elution volume, excellent reproducibility was achieved.



The problem:
Workflow requires dry down to achieve sensitivity



SOLA μ solution:
Low elution volume allows removal of dry down



Peak response for ibuprofen

	Ibuprofen (%RSD) n=18	Ibuprofen recovery (%)
Low QC (25ng/mL)	4.00	90
High QC (750ng/mL)	1.70	95

SOLA and SOLA μ meet bioanalytical needs by providing:

- A robust low sample volume preparation platform
- Sample enrichment (20 times)
- Reproducibility at low sample and solvent levels
- Mitigation against solvation and non-specific binding issues
- Increased workflow efficiency and throughput

SOLA μ 96 Well Plates

Description	Bed Weight (mg)	Column Volume (mL)	Cat. No.	Quantity
SOLA μ HRP	2	1	60209-001	1 Each
SOLA μ SCX	2	1	60209-002	1 Each
SOLA μ SAX	2	1	60209-003	1 Each
SOLA μ WCX	2	1	60209-004	1 Each
SOLA μ WAX	2	1	60209-005	1 Each

SOLA SPE cartridges

Description	Bed Weight (mg)	Column Volume (mL)	Cat. No.	Quantity
SOLA HRP	10	1	60109-001	100 Pack
SOLA SCX	10	1	60109-002	100 Pack
SOLA SAX	10	1	60109-003	100 Pack
SOLA WCX	10	1	60109-004	100 Pack
SOLA WAX	10	1	60109-005	100 Pack

SOLA 96 well plates

Description	Bed Weight (mg)	Well Volume (mL)	Cat. No.	Quantity
SOLA HRP	10	2	60309-001	1 Each
SOLA SCX	10	2	60309-002	1 Each
SOLA SAX	10	2	60309-003	1 Each
SOLA WCX	10	2	60309-004	1 Each
SOLA WAX	10	2	60309-005	1 Each

Learn more at [thermofisher.com/solaspe](https://www.thermofisher.com/solaspe)

HyperSep SLE cartridges and plates

Solid supported liquid/liquid extraction (SLE) is a fast and effective sample preparation technique that provides considerable benefits over liquid-liquid extraction (LLE) protocols for removal of phospholipids from biological samples.

SLE offers the following advantages:

- Greater reproducibility and recoveries compared to LLE techniques
- Prevents emulsification often associated with LLE
- Reduced solvent requirements compared to LLE
- Can be completely automated unlike LLE
- Improved cleanliness of sample extract compared to protein precipitation techniques
- Improved sensitivity compared to protein precipitation techniques



Thermo Scientific™ HyperSep™ SLE is available in cartridge and 96 well plate formats and in acidified or basified formats to help simplify the protocol when acidic or basic mobile phases are used.

HyperSep SLE cartridges

Special treated diatomite SLE	Bed Weight (mg)	Column Volume (mL)	Cat. No.	Quantity
pH=7	200	3	60109-200-3-7	50 Pack
	500	3	60109-500-3-7	50 Pack
	500	6	60109-500-6-7	30 Pack
	1,000	6	60109-1000-6-7	30 Pack
	2,000	12	60109-2000-12-7	20 Pack
	4,000	25	60109-4000-25-7	15 Pack
	20,000	60	60109-20000-60-7	10 Pack
pH=9	200	3	60109-200-3-9	50 Pack
	500	3	60109-500-3-9	50 Pack
	500	6	60109-500-6-9	30 Pack
	1,000	6	60109-1000-6-9	30 Pack
	2,000	12	60109-2000-12-9	20 Pack
	4,000	25	60109-4000-25-9	15 Pack
	20,000	60	60109-20000-60-9	10 Pack

HyperSep SLE 96 well plates

Special treated diatomite SLE	Bed Weight (mg)	Column Volume (mL)	Cat. No.	Quantity
pH=7	200	2	60109-200-2-7W	1 Each
	300	2	60109-300-2-7W	1 Each
	400	2	60109-400-2-7W	1 Each
	500	2	60109-500-2-7W	1 Each
pH=9	200	2	60109-200-2-9W	1 Each
	300	2	60109-300-2-9W	1 Each
	400	2	60109-400-2-9W	1 Each
	500	2	60109-500-2-9W	1 Each

HyperSep protein precipitation plate

Provides a quick and effective approach for removal of proteins from biological compounds using the protein crash technique. In combination with SPE and SLE, the Protein Precipitation Plate offers a comprehensive range of options for sample preparation of biological based compounds. The 96 well plate format provides a high throughput functionality which lends itself to full automation.



- Dual frit design
- Hydrophobic/oleophobic frits to enable only precipitation of proteins
- Pore size optimized for ideal flow rate
- Specially selected polypropylene for low extractables

HyperSep protein precipitation plate

Description	Cat. No.	Quantity
Protein Precipitation Plate	60304-201	1 Each

Learn more at [thermofisher.com/hypersep](https://www.thermofisher.com/hypersep)



Microscale SPE plates and tips

HyperSep Lab Plates

For the purification and sample preparation of proteins, DNA, RNA and other biomolecules

- Sample concentration of small-scale samples
- Available in a range of chromatographic materials
- 96 well plate format with media embedded at the bottom of the plate
- Can be processed manually or using a liquid-handling robot
- Not suitable for use with a vacuum

Applications:

- Tissue culture and separation of products
- Sample concentration
- Sample clean-up
- Collection of sample after chromatography

HyperSep lab plates

Description	Cat. No. (Polystyrene)	Cat. No. (Polypropylene)	Quantity
C18	60110-201	60110-301	5 Pack
C8	60110-202	60110-302	5 Pack
C4	60110-203	60110-303	5 Pack
Hypercarb	60110-204	60110-304	5 Pack
Hypercarb and C18 (Mixed Mode)	60110-205	60110-305	5 Pack
Zirconium Dioxide	60110-206	60110-306	5 Pack
Titanium Dioxide	60110-207	60110-307	5 Pack
SCX	60110-208	60110-308	5 Pack
SAX	60110-209	60110-309	5 Pack

HyperSep filter plates

For effective clean-up of small-scale samples

- 96 well plate for the purification and separation of proteins, peptides, DNA, RNA and other biomolecules
- Clean up of microgram-level samples
- Available in a range of chromatographic materials
- Can be used under vacuum

HyperSep filter plates

Description	Cat. No. (5-7 μ L Bed Volume)	Cat. No. (40 μ L Bed Volume)	Quantity
C18	60110-401	60110-501	1 Each
C8	60110-402	60110-502	1 Each
C4	60110-403	60110-503	1 Each
Hypercarb	60110-404	60110-504	1 Each
Hypercarb and C18 (Mix Mode)	60110-405	60110-505	1 Each
Zirconium Dioxide	60110-406	60110-506	1 Each
Titanium Dioxide	60110-407	60110-507	1 Each
SCX	60110-408	60110-508	1 Each
SAX	60110-409	60110-509	1 Each

HyperSep Microscale solid phase extraction tips

Revolutionary micropipette tip for sample preparation

- Faster sample preparation with minimal sample loss
- Patented micropipette tip in which the chromatographic material is directly attached to its inner surface
- No contamination from the supporting matrix
- Separation in volumes as low as 100nL
- Applications include mass spectrometry, desalting, protein purification and electrophoresis



HyperSep Tip Microscale solid phase extraction tips

Description	Cat. No. (1-10 μ L Capacity)	Cat. No. (10-200 μ L Capacity)	Quantity
Thermo Scientific™ BioBasic™ 18	60109-201	60109-209	96 Pack
BioBasic 8	60109-202	60109-210	96 Pack
BioBasic 4	60109-203	60109-211	96 Pack
Hypercarb	60109-204	60109-212	96 Pack
Hypercarb and C18 (mix mode)	60109-205	60109-213	96 Pack
HILIC	60109-206	60109-214	96 Pack
Trypsin	60109-207	60109-215	96 Pack
Titanium Dioxide	60109-208	60109-216	96 Pack
Zirconium Dioxide	60109-217	60109-218	96 Pack

HyperSep SpinTip microscale solid phase extraction tips

Revolutionary micropipette tip for sample preparation

- Pipette tips with a 1 to 2 μ m wide slit at the bottom that permits the liquid to pass through but retains the chromatographic material (20 to 30 μ m)
- Faster sample preparation with minimal sample loss
- No contamination from the supporting matrix
- Separation in volumes as low as 100nL



HyperSep SpinTip Microscale solid phase extraction tips

Description	Cat. No. (1-10 μ L Capacity)	Cat. No. (10-200 μ L Capacity)	Quantity
C18	60109-401	60109-412	96 Pack
C8	60109-402	60109-413	96 Pack
C4	60109-403	60109-414	96 Pack
Hypercarb	60109-404	60109-415	96 Pack
Hypercarb and C18 (mix mode)	60109-405	60109-416	96 Pack
HILIC	60109-406	60109-417	96 Pack
Trypsin	60109-407	60109-418	96 Pack
POROS Weak Anion Exchanger	60109-408	60109-419	96 Pack
POROS Strong Anion Exchanger	60109-409	60109-420	96 Pack
POROS Strong Cation Exchanger	60109-410	60109-421	96 Pack
Titanium Dioxide	60109-411	60109-422	96 Pack
Zirconium Dioxide	60109-424	60109-425	96 Pack

HyperSep SPE cartridges and plates

HyperSep Retain SPE Cartridges and Plates

Versatile polymeric materials for retention of polar, non-polar, basic and acidic drugs

- Exceptional recoveries for polar and non-polar analytes
- High and consistent recoveries
- High capacity, high purity, highly porous polystyrene DVB material modified with functional groups
 - PEP - Urea for polar and non-polar analytes
 - CX - Sulfonic acid for basic analytes
 - AX - Quaternary amine for acidic analytes
- Fast and easy sample preparation and method development
- pH stable 0 to 14



HyperSep Retain PEP/CX/AX SPE cartridges

Bed Weight (mg)	Column Volume (mL)	Retain PEP Cat No.	Retain CX Cat No.	Retain AX Cat No.	Quantity
30	1	60107-201	60107-301	60107-401	100 Pack
30	3	60107-202	60107-302	60107-402	50 Pack
60	3	60107-203	60107-303	60107-403	50 Pack
60	6	60107-208	60107-308	60107-408	30 Pack
100	3	60107-217	60107-317	60107-417	50 Pack
100	6	60107-207	60107-307	60107-407	30 Pack
150	3	60107-209	60107-309	60107-413	30 Pack
150	6	60107-211	60107-311	60107-411	30 Pack
200	3	60107-204	60107-304	60107-404	50 Pack
200	6	60107-212	60107-314	60107-412	30 Pack
500	3	60107-205	60107-305	60107-405	50 Pack
500	6	60107-206	60107-306	60107-406	30 Pack
500	15	60107-219	60107-319	60107-419	20 Pack
1,000	25	60107-215	60107-315	60107-415	20 Pack
1,000	6	60107-218	60107-318	60107-418	30 Pack
2,000	25	60107-214	60107-312	60107-414	20 Pack

Note: For bed weights less than 30mg please refer to SOLA SPE products on page 1-008.

HyperSep Retain PEP/CX/AX 96 fixed well plates

Bed Weight (mg)	Well Volume (mL)	Retain PEP Cat No.	Retain CX Cat No.	Retain AX Cat No.	Quantity
30	1	60306-207	60306-303	60306-403	1 Each
60	1	60306-208	60306-304	60306-404	1 Each

Note: For bed weights less than 30mg please refer to SOLA SPE products on page 1-008.

HyperSep Retain PEP/CX/AX 96 removable well plate

Bed Weight (mg)	Volume (mL)	Retain PEP Cat No.	Retain CX Cat No.	Retain AX Cat No.	Quantity
30	1	60303-207	60303-307	60303-407	1 Each
60	1	60303-208	60303-308	60303-408	1 Each

Note: For bed weights less than 30mg please refer to SOLA SPE products on page 1-008.

Retain PEP Applications

- Drugs and metabolites in biological fluids
- Peptides in serum, plasma or biological fluids
- Environmental samples

Retain CX Applications

- Analysis of a wide range of drugs of abuse including basic and neutral drugs

Retain AX Applications

- Analysis of THC and its metabolites

HyperSep Hypercarb SPE cartridges and plates

Unique material for retention of highly polar compounds

- Thermo Scientific™ HyperSep™ and Hypercarb™ SPE contains flat, 100% porous graphitic carbon (PGC) with selectivity for structurally similar compounds, offering separation of compounds with simple solvents
- pH stable 0 to 14
- High batch-to-batch reproducibility
- Strong retention properties allow use of low bed weights for concentrated extracts
- Interaction mechanism with polar molecules



HyperSep Hypercarb SPE cartridges

Bed Weight (mg)	Column Volume (mL)	Cat. No.	Quantity
25	1	60106-304	50 Pack
50	1	60106-303	50 Pack
100	1	60106-302	30 Pack
200	3	60106-301	30 Pack
500	6	60106-402	20 Pack
1,000	6	60106-403	10 Pack
2,000	15	60106-404	10 Pack

HyperSep Hypercarb 96 fixed well plates

Bed Weight (mg)	Well Volume (mL)	Cat. No.	Quantity
10	1	60306-501	1 Each
25	1	60306-502	1 Each
50	1	60306-503	1 Each

HyperSep Hypercarb 96 removable well plates

Bed Weight (mg)	Well Volume (mL)	Cat. No.	Quantity
10	1	60302-606	1 Each
25	1	60302-607	1 Each
50	1	60302-608	1 Each

Learn more at thermofisher.com/hypersep

HyperSep C18 SPE cartridges and plates

Feature a highly retentive alkyl-bonded phase for extraction of non-polar to moderately polar compounds

HyperSep C18 SPE cartridges

Bed Weight (mg)	Column Volume (mL)	Cat. No.	Quantity
25	1	60108-376	100 Pack
50	1	60108-390	100 Pack
100	1	60108-302	100 Pack
100	3	60108-765	50 Pack
200	3	60108-303	50 Pack
500	3	60108-304	50 Pack
500	6	60108-305	30 Pack
500	10	60108-786	50 Pack
1,000	6	60108-301	30 Pack
1,000	15	60108-776	20 Pack
2,000	15	60108-701	20 Pack
2000	25	60108-780	20 Pack
5,000	25	60108-702	20 Pack
10,000	75	60108-703	10 Pack

Applications:

- Retentive for non-polar compounds
- Retains most organic analytes from aqueous matrices

HyperSep C18 96 fixed/removable well plates

Bed Weight (mg)	Well Volume (mL)	Fixed Cat. No.	Removable Cat. No.	Quantity
10	1	60307-201	60300-425	1 Each
25	1	60307-202	60300-426	1 Each
50	1	60307-203	60300-427	1 Each
100	1	60307-204	60300-428	1 Each

HyperSep C8 SPE cartridges and plates

Less retentive alternative to C18 for polar and non-polar compounds

HyperSep C8 SPE cartridges

Bed Weight (mg)	Column Volume (mL)	Cat. No.	Quantity
50	1	60108-391	100 Pack
100	1	60108-392	100 Pack
200	3	60108-393	50 Pack
500	3	60108-309	50 Pack
500	6	60108-394	30 Pack
1,000	6	60108-427	30 Pack
2,000	15	60108-704	20 Pack
5,000	25	60108-705	20 Pack
10,000	75	60108-706	10 Pack

Applications:

- Drugs and their metabolites in biological samples
- Peptides in biological samples

HyperSep C8 96 fixed/removable well plates

Bed Weight (mg)	Well Volume (mL)	Fixed Cat. No.	Removable Cat. No.	Quantity
10	1	60307-211	60300-445	1 Each
25	1	60307-212	60300-446	1 Each
50	1	60307-213	60300-447	1 Each
100	1	60307-214	60300-448	1 Each

HyperSep Silica SPE cartridges and plates

A polar sorbent primarily used to retain analytes in non-polar matrices

HyperSep Silica SPE cartridges

Bed Weight (mg)	Column Volume (mL)	Cat. No.	Quantity
50	1	60108-409	100 Pack
100	1	60108-317	100 Pack
200	3	60108-410	50 Pack
500	3	60108-315	50 Pack
500	6	60108-411	30 Pack
500	10	60108-793	50 Pack
1,000	6	60108-426	30 Pack
2,000	15	60108-710	20 Pack
5,000	25	60108-711	20 Pack
10,000	25	60108-853	20 Pack
10,000	75	60108-712	10 Pack
50,000	150	60108-850	10 Pack
20,000	75	60108-851	10 Pack
70,000	150	60108-852	10 Pack

Applications:

- Extraction of polar compounds including aldehydes, amines, drugs, pesticides and herbicides
- Extraction of carotenoids, fat-soluble vitamins, aflatoxins in food matrices
- Extraction of fatty acids and phospholipids

HyperSep Silica 96 fixed/removable well plates

Bed Weight (mg)	Well Volume (mL)	Fixed Cat. No.	Removable Cat. No.	Quantity
10	1	60307-231	60300-485	1 Each
25	1	60307-232	60300-486	1 Each
50	1	60307-233	60300-487	1 Each
100	1	60307-234	60300-488	1 Each

HyperSep acid wash silica SPE cartridges and plates

HyperSep acid wash silica SPE cartridges

Bed Weight (mg)	Column Volume (mL)	Cat. No.	Quantity
50	1	60108-901	100 Pack
100	1	60108-902	100 Pack
100	10	60108-903	50 Pack
200	3	60108-904	50 Pack
200	10	60108-905	50 Pack
500	3	60108-906	50 Pack
500	6	60108-907	30 Pack
500	10	60108-908	50 Pack
1,000	6	60108-909	30 Pack
2,000	15	60108-910	20 Pack
5,000	25	60108-911	20 Pack
10,000	75	60108-912	10 Pack

Applications:

- Extraction of polar compounds from ground, waste and drinking water
- Extraction of polar compounds from food and beverages

HyperSep acid wash silica 96 fixed/removable well plates

Bed Weight (mg)	Well Volume (mL)	Fixed Cat. No.	Removable Cat. No.	Quantity
10	1	60307-321	60300-831	1 Each
25	1	60307-322	60300-832	1 Each
50	1	60307-323	60300-833	1 Each
100	1	60307-324	60300-834	1 Each

HyperSep phenyl SPE cartridges and plates

Offer alternative selectivity for retention of basic compounds

HyperSep phenyl SPE cartridges

Bed Weight (mg)	Column Volume (mL)	Cat. No.	Quantity
50	1	60108-516	100 Pack
100	1	60108-386	100 Pack
200	3	60108-387	50 Pack
500	3	60108-388	50 Pack
500	6	60108-389	30 Pack
1,000	6	60108-517	30 Pack
2,000	15	60108-707	20 Pack
5,000	25	60108-708	20 Pack
10,000	75	60108-709	10 Pack

Applications:

- Extraction of aromatic compounds
- Extraction of basic analytes

HyperSep phenyl 96 fixed/removable well plates

Bed Weight (mg)	Well Volume (mL)	Fixed Cat. No.	Removable Cat. No.	Quantity
10	1	60307-221	60300-685	1 Each
25	1	60307-222	60300-686	1 Each
50	1	60307-223	60300-687	1 Each
100	1	60307-224	60300-688	1 Each

HyperSep Diol SPE cartridges and plates

Ideal for the extraction of polar compounds

HyperSep Diol SPE cartridges

Bed Weight (mg)	Column Volume (mL)	Cat. No.	Quantity
50	1	60108-571	100 Pack
100	1	60108-572	100 Pack
200	3	60108-573	50 Pack
500	3	60108-574	50 Pack
500	6	60108-575	30 Pack
1,000	6	60108-576	30 Pack
2,000	15	60108-755	20 Pack
5,000	25	60108-756	20 Pack
10,000	75	60108-757	10 Pack

Applications:

- Normal phase extraction of polar compounds
- Purification of polar compounds

HyperSep Diol 96 fixed/removable well plates

Bed Weight (mg)	Well Volume (mL)	Fixed Cat. No.	Removable Cat. No.	Quantity
10	1	60307-311	60300-630	1 Each
25	1	60307-312	60300-631	1 Each
50	1	60307-313	60300-632	1 Each
100	1	60307-314	60300-633	1 Each

HyperSep Verify CX SPE cartridges and plates

Features non-polar and ionic characteristics for improved analysis of drugs of abuse

HyperSep Verify CX SPE cartridges

Bed Weight (mg)	Column Volume (mL)	Cat. No.	Quantity
50	1	60108-741	100 Pack
130	1	60108-719	100 Pack
130	10	60108-769	50 Pack
200	3	60108-777	50 Pack
200	6	60108-722	50 Pack
200	10	60108-742	50 Pack
300	3	60108-720	50 Pack
500	3	60108-721	50 Pack
500	6	60108-723	30 Pack
1,000	6	60108-724	30 Pack

Applications:

- Analysis of a wide range of drugs of abuse from biological matrices, including basic and neutral drugs

HyperSep Verify CX 96 fixed/removable well plates

Bed Weight (mg)	Well Volume (mL)	Fixed Cat. No.	Removable Cat. No.	Quantity
10	1	60307-261	60300-805	1 Each
25	1	60307-262	60300-806	1 Each
50	1	60307-263	60300-807	1 Each
100	1	60307-264	60300-808	1 Each

HyperSep Verify AX SPE cartridges and plates

Features non-polar and ionic characteristics for improved analysis of acidic drugs and metabolites

HyperSep Verify AX SPE cartridges

Bed Weight (mg)	Column Volume (mL)	Cat. No.	Quantity
130	1	60108-727	100 Pack
130	10	60108-767	50 Pack
200	3	60108-768	30 Pack
200	6	60108-730	50 Pack
200	10	60108-764	50 Pack
300	3	60108-728	50 Pack
500	3	60108-729	50 Pack
500	6	60108-731	30 Pack
1,000	6	60108-732	30 Pack

Applications:

- Analysis of THC and its metabolites

HyperSep Verify AX 96 fixed/removable well plates

Bed Weight (mg)	Well Volume (mL)	Fixed Cat. No.	Removable Cat. No.	Quantity
10	1	60307-271	60300-813	1 Each
25	1	60307-272	60300-814	1 Each
50	1	60307-273	60300-815	1 Each
100	1	60307-274	60300-816	1 Each

Learn more at [thermofisher.com/hypersep](https://www.thermofisher.com/hypersep)

HyperSep Strong Cation Exchanger (SCX) SPE cartridges and plates

A strong cation exchange sorbent for extraction of charged basic compounds

HyperSep Strong Cation Exchanger (SCX) SPE cartridges

Bed Weight (mg)	Column Volume (mL)	Cat. No.	Quantity
50	1	60108-420	100 Pack
100	1	60108-421	100 Pack
200	3	60108-422	50 Pack
500	3	60108-423	50 Pack
500	6	60108-520	30 Pack
1,000	6	60108-433	30 Pack
2,000	15	60108-716	20 Pack
5,000	25	60108-717	20 Pack
10,000	75	60108-718	10 Pack
20,000	75	60108-857	10 Pack
50,000	150	60108-858	10 Pack

Applications:

- Isolation of cationic compounds from complex samples
- Removal of basic drugs
- Organic bases
- Nucleic acid bases, nucleotides and surfactants

HyperSep Strong Cation Exchanger (SCX) 96 fixed/removable well plates

Bed Weight (mg)	Well Volume (mL)	Fixed Cat. No.	Removable Cat. No.	Quantity
10	1	60307-251	60300-585	1 Each
25	1	60307-252	60300-586	1 Each
50	1	60307-253	60300-587	1 Each
100	1	60307-254	60300-588	1 Each

HyperSep Strong Anion Exchanger (SAX) SPE cartridges and plates

Strong anion exchange sorbent for extraction of weak acids

HyperSep Strong Anion Exchanger (SAX) SPE cartridges

Bed Weight (mg)	Column Volume (mL)	Cat. No.	Quantity
50	1	60108-417	100 Pack
100	1	60108-418	100 Pack
200	3	60108-419	50 Pack
500	3	60108-521	50 Pack
500	6	60108-360	30 Pack
1,000	6	60108-434	30 Pack
2,000	15	60108-713	20 Pack
5,000	25	60108-714	20 Pack
10,000	75	60108-715	10 Pack

Applications:

- Isolation of anionic compounds from complex samples
- Removal of acidic food pigments
- Isolation of phenolic compounds
- Nucleic acids, nucleotides and surfactants

HyperSep Strong Anion Exchanger (SAX) 96 fixed/removable well plates

Bed Weight (mg)	Well Volume (mL)	Fixed Cat. No.	Removable Cat. No.	Quantity
10	1	60307-241	60300-565	1 Each
25	1	60307-242	60300-566	1 Each
50	1	60307-243	60300-567	1 Each
100	1	60307-244	60300-568	1 Each

HyperSep Carboxylic Acid (WCX) SPE cartridges and plates

Weak cation exchange sorbent for extraction of strong bases

HyperSep Carboxylic Acid (WCX) SPE cartridges

Bed Weight (mg)	Column Volume (mL)	Cat. No.	Quantity
50	1	60108-201	100 Pack
100	1	60108-202	100 Pack
200	3	60108-203	50 Pack
200	10	60108-207	50 Pack
500	3	60108-204	50 Pack
500	6	60108-205	30 Pack
1,000	6	60108-206	30 Pack
2,000	15	60108-208	20 Pack
5,000	25	60108-209	20 Pack

Applications:

- Drugs and metabolites in biological fluids
- Peptides in serum, plasma or biological fluids
- Pesticides in water, food and beverages
- Nucleic acids, nucleotides and surfactants

HyperSep Carboxylic Acid (WCX) 96 fixed/removable well plates

Bed Weight (mg)	Well Volume (mL)	Fixed Cat. No.	Removable Cat. No.	Quantity
10	1	60307-331	60300-841	1 Each
25	1	60307-332	60300-842	1 Each
50	1	60307-333	60300-843	1 Each
100	1	60307-334	60300-844	1 Each

HyperSep Aminopropyl (WAX) SPE cartridges and plates

Weak anion exchange sorbent for extraction of strong acids

HyperSep Aminopropyl (WAX) SPE cartridges

Bed Weight (mg)	Column Volume (mL)	Cat. No.	Quantity
50	1	60108-424	100 Pack
50	3	60108-429	50 Pack
100	1	60108-364	100 Pack
200	3	60108-425	50 Pack
500	3	60108-518	50 Pack
500	6	60108-519	30 Pack
1,000	6	60108-432	30 Pack
2,000	15	60108-738	20 Pack
5,000	25	60108-739	20 Pack
10,000	75	60108-740	10 Pack

Applications:

- Separation of structural isomers
- Drugs and metabolites in biological fluids
- Separation of saccharides, phenols and petroleum products

HyperSep Aminopropyl (WAX) 96 fixed/removable well plates

Bed Weight (mg)	Well Volume (mL)	Fixed Cat. No.	Removable Cat. No.	Quantity
10	1	60307-291	60300-505	1 Each
25	1	60307-292	60300-506	1 Each
50	1	60307-293	60300-507	1 Each
100	1	60307-294	60300-508	1 Each

HyperSep Florisil SPE cartridges and plates

Ideal for the isolation of polar compounds from non-polar matrices



HyperSep Florisil SPE cartridges

Bed Weight (mg)	Column Volume (mL)	Cat. No.	Quantity
50	1	60108-402	100 Pack
100	1	60108-403	100 Pack
200	3	60108-404	50 Pack
500	3	60108-405	50 Pack
500	6	60108-500	30 Pack
1,000	6	60108-431	30 Pack
2,000	6	60108-758	30 Pack
2,000	15	60108-735	20 Pack
5,000	25	60108-736	20 Pack
10,000	75	60108-737	10 Pack

Applications:

- Extraction of pesticides using official methods
- Polychlorinated biphenyls in transformer oil
- Alcohol, aldehydes, amines and drugs

HyperSep Florisil 96 fixed/removable well plates

Bed Weight (mg)	Well Volume (mL)	Fixed Cat. No.	Removable Cat. No.	Quantity
10	1	60307-281	60300-725	1 Each
25	1	60307-282	60300-726	1 Each
50	1	60307-283	60300-727	1 Each
100	1	60307-284	60300-728	1 Each

HyperSep Cyano SPE cartridges and plates

Optimized for the retention of moderately polar compounds from non-polar matrices

HyperSep Cyano SPE cartridges

Bed Weight (mg)	Column Volume (mL)	Cat. No.	Quantity
50	1	60108-746	100 Pack
100	1	60108-745	100 Pack
200	3	60108-747	50 Pack
500	3	60108-748	50 Pack
500	6	60108-749	30 Pack
1,000	6	60108-750	30 Pack
2,000	15	60108-751	20 Pack
5,000	25	60108-752	20 Pack
10,000	75	60108-753	10 Pack

Applications:

- Retaining polar compounds from hexane and oils
- Reversed phase extraction of moderately polar compounds

HyperSep Cyano 96 fixed/removable well plates

Bed Weight (mg)	Well Volume (mL)	Fixed Cat. No.	Removable Cat. No.	Quantity
10	1	60307-301	60300-821	1 Each
25	1	60307-302	60300-822	1 Each
50	1	60307-303	60300-823	1 Each
100	1	60307-304	60300-824	1 Each

SPE manifolds and accessories

A comprehensive range of accessories to improve your sample preparation workflow

HyperSep positive pressure manifold

HyperSep positive pressure manifold

Description	Cat. No.	Quantity
Positive Pressure Manifold with 13mm Collection Rack	60104-236	1 Each
Positive Pressure Manifold with 16mm Collection Rack	60104-274	1 Each
Adaptor Plate for 1mL Cartridges for PP Manifold	60104-265	1 Each
Adaptor Plate for 3mL Cartridges for PP Manifold	60104-266	1 Each
Adaptor Plate for 6mL Cartridges for PP Manifold	60104-267	1 Each
Adaptor Plate for 10mL/15mL Cartridges for PP Manifold	60104-271	1 Each
Collection Rack for 13mm Tubes	60104-268	1 Each
Collection Rack for 16mm Tubes	60104-269	1 Each
Pre-Drilled Waste Container	60104-270	1 Each
Installation Kit	60104-272	1 Each
In Line Air Filter	60104-273	1 Each



Learn more at thermofisher.com/spemanifolds

HyperSep universal vacuum manifold

- Accommodates both SPE cartridges and 96 well plates
- System supplied with: Manifold, base/gauge, flask and stopper, tubing and spigots



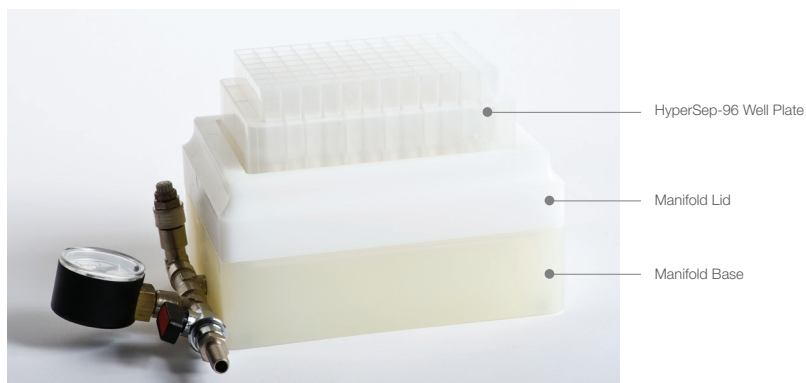
HyperSep universal vacuum manifold

Description	Cat. No.	Quantity
Universal Vacuum Manifold	60104-230	1 Each
Vacuum Pump, European Version	60104-241	1 Each
Vacuum Pump, North American Version	60104-243	1 Each
24 Well Extraction Plate	60104-284	1 Each
48 Well Extraction Plate	60104-289	1 Each
Plugs for 24-position Extraction Plate	60104-234	24 Pack
Plugs for 48-position Extraction Plate	60104-235	48 Pack

HyperSep-96 well plate vacuum manifold

Included with system:

- Base
- Lid
- Waste collection tray



HyperSep-96 well plate is not included and needs to be purchased separately.

HyperSep-96 well plate manifolds

Description	Cat. No.	Quantity
HyperSep-96 Vacuum Manifold	60103-351	1 Each
Vacuum Pump, European Version	60104-241	1 Each
Vacuum Pump, North American Version	60104-243	1 Each

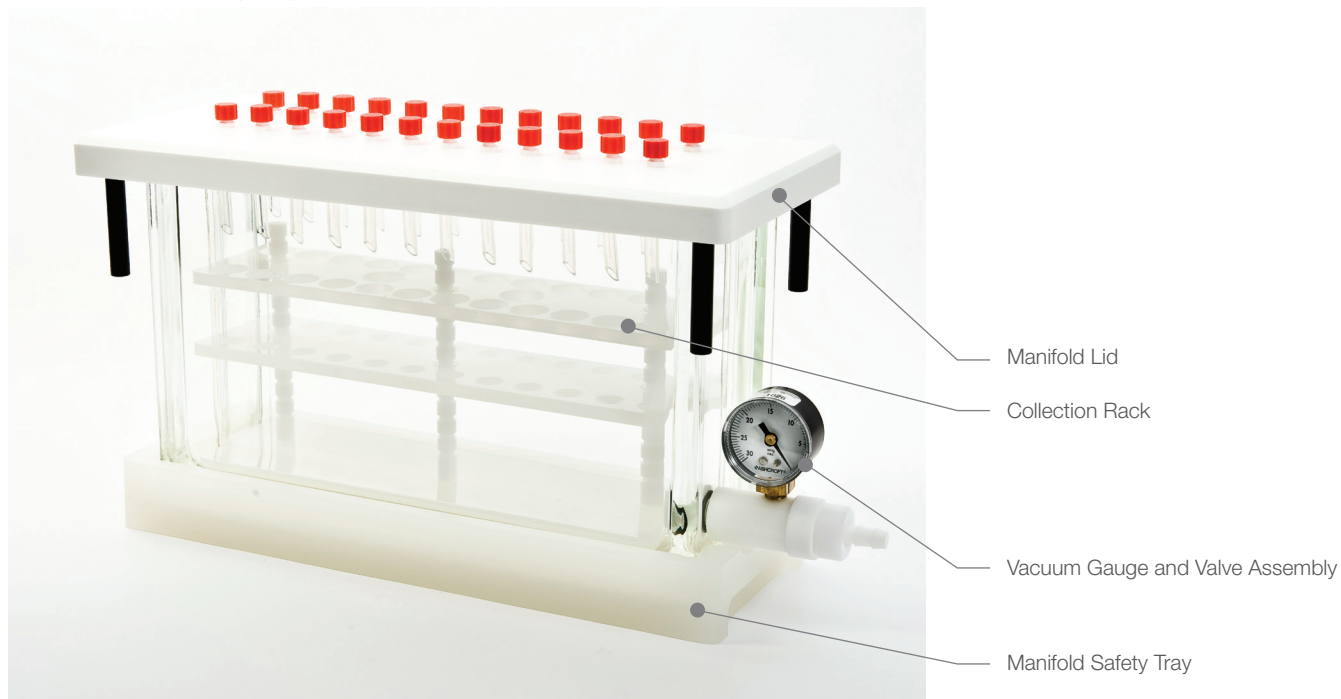
HyperSep glass block manifolds

16-Port Vacuum Manifold:

- Glass block, corian manifold lid, cover gasket, vacuum gauge and valve assembly, 16 tips, adjustable collection rack, bulkhead luer fittings, 16 plugs and manifold safety tray

24-Port Vacuum Manifold:

- Glass block, corian manifold lid, cover gasket, vacuum gauge and valve assembly, 24 tips, adjustable collection rack, bulkhead luer fittings, 24 plugs and manifold safety tray



Luer Lock Plugs
(Cat. No. 60104-258)



Retaining Clips for
Collection Rack
(Cat. No. 60104-255)



Bulkhead Luer Fittings
(Cat. No. 60104-256)



Collection Rack
(Cat. No. 60104-251 (16 port),
60104-252 (24 port))



Vacuum Gauge
(Cat. No. 60104-240)



Valve Assembly
(Cat. No. 60104-261)



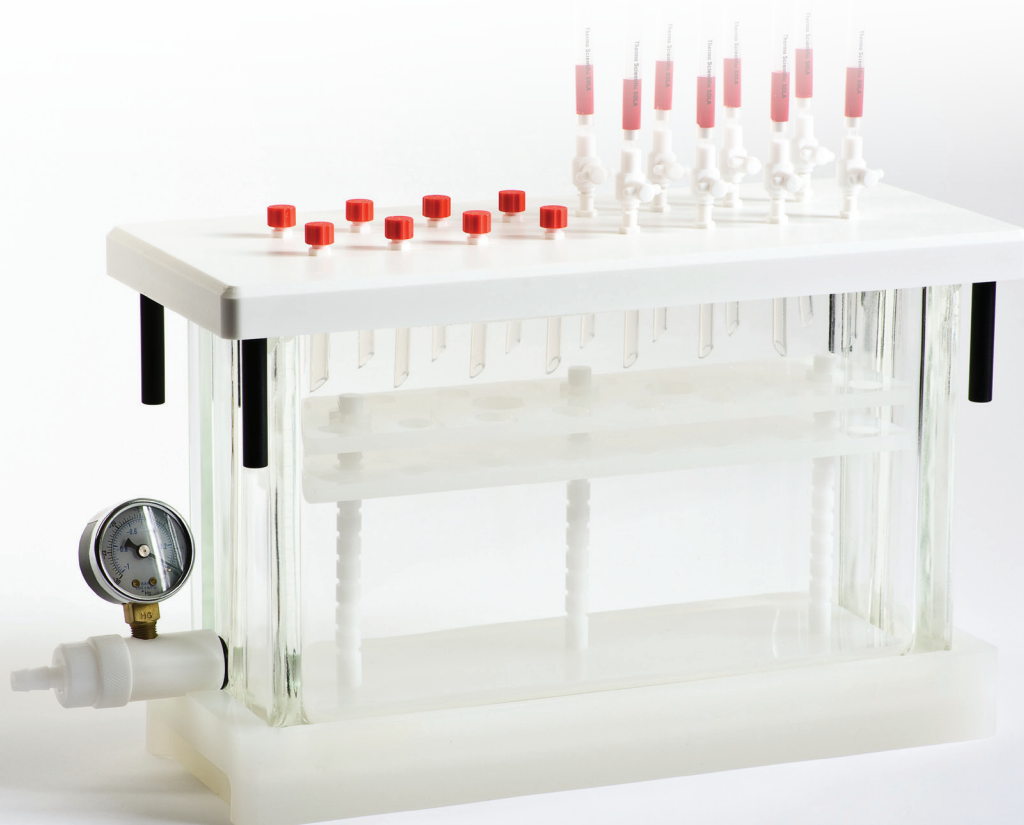
Tips
(Cat. No. 60104-245)



Manifold Lid Legs
(Cat. No. 60104-257)

HyperSep glass block manifolds

Description	Cat. No.	Quantity
16-port Vacuum Manifold	60104-232	1 Each
24-port Vacuum Manifold	60104-233	1 Each
Vacuum Pump, European Version	60104-241	1 Each
Vacuum Pump, North American Version	60104-243	1 Each
Replacement parts		
Vacuum Gauge	60104-240	1 Each
Stopcocks for 16-port Vacuum Manifold	60104-242	16 Pack
Stopcocks for 24-port Vacuum Manifold	60104-244	24 Pack
Tips for Vacuum Manifold	60104-245	12 Pack
Lid for 16-port Glass Block Manifold	60104-262	1 Each
Lid for 24-port Glass Block Manifold	60104-248	1 Each
Gasket for 16-port Manifold	60104-249	1 Each
Gasket for 24-port Manifold	60104-250	1 Each
Collection Rack for 16-port Vacuum Manifold	60104-251	1 Each
Collection Rack for 24-port Vacuum Manifold	60104-252	1 Each
Glass Block for 16-port Vacuum Manifold	60104-253	1 Each
Glass Block for 24-port Vacuum Manifold	60104-254	1 Each
Retaining Clips for Collection Rack	60104-255	12 Pack
Bulkhead Luer Fittings	60104-256	12 Pack
Manifold Lid Legs	60104-257	4 Pack
Luer Lock Plugs	60104-258	12 Pack
Column Adaptors	60104-259	15 Pack
Manifold Safety Tray	60104-260	1 Each
Vacuum Gauge and Valve Assembly	60104-261	1 Each
Collection Rack Posts	60104-264	3 Pack



HyperSep online SPE products

Retain specific analytes in a sample matrix when used with an appropriate HPLC column

- Effective removal of contaminants such as proteins from samples
- Compatible with conventional HPLC systems
- Fast and effective clean-up and concentration of target compounds



HyperSep Javelin direct-connect online SPE columns

ID (mm)	Length (mm)	Retain PEP	Retain CX	Retain AX	Hypercarb	Quantity
2.1	10	60310-201	60310-301	60310-401	60310-501	4 Pack
3.0	10	60310-202	60310-302	60310-402	60310-502	4 Pack

HyperSep UniGuard direct-connect online SPE cartridges

ID (mm)	Length (mm)	Retain PEP	Retain CX	Retain AX	Hypercarb	Quantity
2.1	10	60311-201	60311-301	60311-401	60311-501	4 Pack
3.0	10	60311-202	60311-302	60311-402	60311-502	4 Pack

HyperSep HPLC columns for online SPE

ID (mm)	Length (mm)	Retain PEP	Retain CX	Retain AX	Hypercarb	Quantity
2.1	20	60312-201	60312-301	60312-401	60312-501	1 Each
3.0	20	60312-202	60312-302	60312-402	60312-502	1 Each

Learn more at [thermofisher.com/spemanifolds](https://www.thermofisher.com/spemanifolds)

HyperSep Dispersive SPE (QuEChERS)

Fast, easy and robust sample preparation of food for pesticide analysis

QuEChERS Dispersive SPE products provide a Quick, Easy, Cheap, Effective, Rugged and Safe sample preparation technique for multi-residue pesticide analysis. Products are available in a wide range of formats to meet application requirements.

QuEChERS methods overcome problems associated with time consuming, expensive and labor intensive multi-residue methods (MRM).

- Fast and easy sample preparation
- Robust and reproducible process
- High recovery and reproducibility

Learn more about HyperSep Dispersive SPE at thermofisher.com/quechers



HyperSep Dispersive SPE

Considerations in method development

- 1) Determine the properties of the pesticides of interest:
 - Base sensitive compounds - use extraction product with sodium acetate
 - pH dependent
 - Non-base sensitive compounds - use extraction product with sodium chloride or sodium citrate
- 2) Determine the properties of the sample matrix:
 - General
 - Fatty
 - Pigmented
 - Highly pigmented

Product selection – sample cleanup

Matrix Type	Examples	Sorbent Requirements
General Matrices	Apples Cucumber Melon	Magnesium sulfate, PSA
Fatty Matrices	Milk Cereals Fish	Magnesium sulfate, PSA, C18
Pigmented Matrices	Lettuce Carrot Wine	Magnesium sulfate, PSA, C18, GCB
High Pigmented Matrices	Spinach Red Peppers	Magnesium sulfate, PSA, C18, GCB

QuEChERS troubleshooting

Problem	Causes	Recommended Solutions
Loss of planar pesticides	Presence of GCB may result in a loss of planar compounds	Use a product with less GCB Use the Dual Phase QuEChERS product
Loss of acidic compounds e.g. 2,4-D from starting matrix	Presence of PSA will extract acidic compounds from matrix	Use a product containing magnesium sulfate and C18
Loss of compounds during subsequent analysis	Some compounds are unstable and can break down during analysis	Use an analyte protectant e.g. toluene or sorbitol
Addition of sample to QuEChERS extraction tube containing sorbent causes an exothermic reaction	Exothermic reaction between water in sample and magnesium sulfate	Add the sample to the tube, then the solvents, then the sorbent materials
Poor recovery of pesticide compounds	Sample not in appropriate homogenization state	Wrong products used in method Ensure sample is hydrated to 80% or higher Verify nature of pesticides e.g. are base sensitive compounds present

HyperSep Dispersive SPE extraction products

HyperSep Dispersive SPE pre-packed extraction products

Description	Capacity (mL)	Cat. No. (250 Pack)	Cat. No. (25 Pack)
6000mg anhydrous magnesium sulfate, 1500mg anhydrous sodium acetate	50	60105-210	60105-310
4000mg anhydrous magnesium sulfate, 1000mg anhydrous sodium chloride	50	60105-211	60105-311
4000mg anhydrous magnesium sulfate, 1000mg sodium chloride, 1000mg sodium citrate tribasic dihydrate, 500mg disodium citrate sesquihydrate	50	60105-216	60105-316
6000mg anhydrous magnesium sulfate, 1500mg sodium chloride, 1500mg sodium citrate tribasic dihydrate, 750mg disodium citrate sesquihydrate	50	60105-212	60105-312
1500mg magnesium sulfate, 500mg C18	50	60105-234	–
900mg anhydrous magnesium sulfate, 300mg PSA, 150mg GCB	50	60105-237	–
1200mg anhydrous magnesium sulfate, 200mg PSA	50	60105-351	–

Each pack contains centrifuge tubes pre-packed with sorbents

HyperSep Dispersive SPE multipacks

Description	Cat. No.	Quantity
4000mg anhydrous magnesium sulfate, 1000mg sodium chloride	60105-332	50 Pack
4000mg anhydrous magnesium sulfate, 1000mg sodium chloride, 500mg sodium citrate dibasic sesquihydrate, 1000mg sodium citrate tribasic	60105-333	50 Pack
4000mg anhydrous magnesium sulfate, 1000mg sodium acetate	60105-334	50 Pack
6000mg anhydrous magnesium sulfate, 1500mg sodium acetate	60105-335	50 Pack
6000mg anhydrous magnesium sulfate, 1500mg sodium chloride	60105-336	50 Pack
6000mg anhydrous magnesium sulfate, 1500mg magnesium sulfate, 1500mg sodium citrate dihydrate, 750mg disodium citrate sesquihydrate	60105-337	50 Pack
8000mg anhydrous magnesium sulfate, 2000mg of sodium chloride	60105-338	50 Pack
8000mg anhydrous magnesium sulfate, 3500mg of sodium chloride	60105-339	50 Pack
5000mg anhydrous magnesium sulfate	60105-366	50 Pack
500mg C18 sulfate	60105-367	50 Pack

Each pack contains centrifuge tubes and sorbents packaged in mylar pouches

HyperSep Dispersive SPE mylar pouches

Description	Cat. No.	Quantity
4000mg anhydrous magnesium sulfate, 1000mg sodium chloride	60105-340	50 Pack
6000mg anhydrous magnesium sulfate, 1500mg sodium acetate (anhydrous)	60105-341	50 Pack
6000mg anhydrous magnesium sulfate, 1500mg sodium chloride	60105-342	50 Pack
6000mg anhydrous magnesium sulfate, 1500mg sodium chloride, 1500mg sodium citrate dihydrate, 750mg disodium citrate sesquihydrate	60105-343	50 Pack
4000mg anhydrous magnesium sulfate, 1000mg sodium chloride, 500mg sodium citrate dibasic sesquihydrate, 1000mg sodium citrate tribasic	60105-344	50 Pack
1200mg sodium chloride	60105-345	50 Pack
4000mg sodium sulfate and 500mg anhydrous magnesium sulfate	60105-346	50 Pack
4000mg anhydrous magnesium sulfate, 1000mg sodium chloride, 1500mg sodium citrate dibasic dihydrate	60105-347	100 Pack
4000mg anhydrous magnesium sulfate, 2000mg sodium chloride, 1500mg sodium citrate dibasic dihydrate	60105-348	100 Pack
150mg anhydrous magnesium sulfate, 50mg PSA, 50mg GCB	60105-354	50 Pack
900mg anhydrous magnesium sulfate, 300mg PSA, 150mg C18	60105-355	50 Pack
900mg anhydrous magnesium sulfate, 900mg PSA, 150mg C18	60105-358	50 Pack
6000mg anhydrous magnesium sulfate, 1000mg sodium chloride	60105-359	50 Pack

Each pack contains sorbents packaged in mylar pouches (no centrifuge tubes provided)

Empty centrifugation tubes

Description	Cat. No.	Quantity
Empty 50ml centrifugue tubes	60106-418	250 Pack

HyperSep Dispersive SPE Clean-up products

HyperSep Dispersive SPE Clean-up products

Description	Capacity (mL)	Cat. No. (100 Pack)	Cat. No. (10 Pack)
150mg anhydrous magnesium sulfate, 50mg PSA, 50mg GCB	2	60105-202	60105-302
150mg anhydrous magnesium sulfate, 50mg PSA	2	60105-203	60105-303
150mg anhydrous magnesium sulfate, 50mg PSA, 50mg C18	2	60105-204	60105-304
150mg anhydrous magnesium sulfate, 25mg PSA	2	60105-219	60105-319
150mg anhydrous magnesium sulfate, 25mg PSA, 25mg C18	2	60105-220	60105-320
150mg anhydrous magnesium sulfate, 25mg PSA, 2.5mg GCB	2	60105-221	60105-321
150mg anhydrous magnesium sulfate, 25mg PSA, 7.5mg GCB	2	60105-222	60105-322
150mg anhydrous magnesium sulfate, 50mg PSA, 50mg C18, 50mg GCB	2	60105-223	60105-323
150mg anhydrous magnesium sulfate, 50mg PSA, 50mg ChloroFiltr™	2	60105-232	-
150mg anhydrous magnesium sulfate, 150mg PSA	2	50105-350	60105-350
150mg anhydrous magnesium sulfate, 50mg PSA, 50mg ChloroFiltr, 50mg C18	2	60105-353	-

Description	Capacity (mL)	Cat. No. (100 Pack)	Cat. No. (10 Pack)
900mg anhydrous magnesium sulfate, 300mg PSA, 150mg GCB	15	60105-205	60105-305
900mg anhydrous magnesium sulfate, 300mg PSA, 150mg C18	15	60105-206	60105-306
750mg anhydrous magnesium sulfate, 250mg PSA, 250mg C18, 250mg GCB	15	60105-213	60105-313
900mg anhydrous magnesium sulfate, 300mg PSA	15	60105-214	60105-314
900mg anhydrous magnesium sulfate, 150mg PSA	15	60105-215	60105-315
900mg anhydrous magnesium sulfate, 150mg PSA, 45mg GCB	15	60105-217	60105-317
900mg anhydrous magnesium sulfate, 150mg PSA, 15mg GCB	15	60105-218	60105-318
1200mg anhydrous magnesium sulfate, 400mg PSA	15	60105-224	60105-324
1200mg anhydrous magnesium sulfate, 400mg PSA, 400mg C18	15	60105-225	60105-325
1200mg anhydrous magnesium sulfate, 400mg PSA, 400mg C18, 400mg GCB	15	60105-226	60105-326
900mg anhydrous magnesium sulfate, 150mg PSA, 150mg C18	15	60105-227	60105-327
150mg anhydrous magnesium sulfate, 50mg PSA, 50mg GCB	15	60105-230	60105-330
150mg anhydrous magnesium sulfate, 300mg PSA, 150mg ChloroFiltr	15	60105-231	60105-331
1200mg anhydrous magnesium sulfate, 900mg PSA	15	60105-235	-
4000mg anhydrous magnesium sulfate, 1000mg sodium chloride, 1000mg sodium citrate tribasic dihydrate, 500mg sodium citrate dibasic sesquihydrate	15	60105-236	-
150mg anhydrous magnesium sulfate, 150mg PSA, 50mg C18	15	60105-238	-

Each pack contains centrifuge tubes pre-packed with sorbents

Bulk media

Description	Cat. No.	Quantity
Anhydrous Magnesium Sulfate	80020-415	1kg
C18 (endcapped)	80020-413	1kg
PSA	80020-416	1kg
Graphitized Carbon Black	80020-417	1kg
Sodium Acetate	80020-424	1kg
Description: Disodium hydrogen citrate sesquihydrate	80020-427	1kg
Tri-Sodium Citrate Dihydrate	80020-428	1kg

Homogenizers

Description	Cat. No.	Quantity
Homogenizers for 15mL QuEChERS tubes	60106-421	50 Pack
Homogenizers for 50mL QuEChERS tubes	60106-422	50 Pack

HyperSep Dispersive SPE Clean-up products for schenck method

Description	Capacity (mL)	Cat. No.	Quantity
400mg PSA on bottom, 200mg GCB on top, separated by a frit	6	60105-207	30 Pack
500mg PSA on bottom, 250mg GCB on top, separated by a frit	6	60105-208	30 Pack
500mg PSA on bottom, 500mg GCB on top, separated by a frit	6	60105-209	30 Pack

Syringes and filters

Providing high quality filtration solutions for a variety of samples and applications

Choose from a variety of syringe filter sizes, membranes and housings for a wide range of laboratory applications.

High quality filtration

- Low extractable membranes and solvent-resistant housing

Titan3 color coded ring

- For easy selection of correct membrane and pore size

High burst pressures

- For enhanced robustness in sample processing



For more information visit thermofisher.com/syningefilters

Titan3 syringe filters

High performance HPLC syringe filters

- Low extractable membranes and housing
- HPLC performance tested
- Color coding for easy selection of the correct membrane and pore size
- Enhanced Luer Lock inlet which prevents leakage
- Most 30mm devices are provided with a 1mm boro-silicate glass pre-filter
This is of benefit for high solids samples with larger size particulates
- Integral ring provides greater strength to the housing preventing leakage and bursting
- 30mm products pressure rated to 120psi
- Packed in reusable rigid transparent color coded containers

Thermo Scientific™ Titan3™ nylon syringe filters

Diameter (mm)	Pore Size (µm)	Pre-Filter	Cat. No.	Quantity
4	0.2	No	42204-NN	100 Pack
	0.45	No	44504-NN	100 Pack
17	0.2	No	42213-NN	200 Pack
	0.45	No	44513-NN	200 Pack
30	0.2	Yes	42225-NN	100 Pack
	0.45	Yes	44525-NN	100 Pack
	0.45	No	44526-NN	100 Pack
	1.5	No	41225-NN	100 Pack
	5	No	45025-NN	100 Pack

Titan3 PTFE (hydrophobic) syringe filters

Diameter (mm)	Pore Size (µm)	Pre-Filter	Cat. No.	Quantity
4	0.2	No	42204-NP	100 Pack
	0.45	No	44504-NP	100 Pack
17	0.2	No	42213-NP	200 Pack
	0.45	No	44513-NP	200 Pack
30	0.2	Yes	42225-NP	100 Pack
	0.45	Yes	44525-NP	100 Pack
	1.0	No	41025-NP	100 Pack

Titan3 PTFE (hydrophilic) syringe filters

Diameter (mm)	Pore Size (µm)	Pre-Filter	Cat. No.	Quantity
17	0.2	No	42213-NPL	200 Pack
	0.45	No	44513-NPL	200 Pack
30	0.2	No	42225-NPL	100 Pack
	0.45	No	444525-NPL	100 Pack

Titan3 PVDF syringe filters

Diameter (mm)	Pore Size (µm)	Pre-Filter	Cat. No.	Quantity
4	0.2	No	42204-PV	100 Pack
	0.45	No	44504-PV	100 Pack
17	0.2	Yes	42213-PV	200 Pack
	0.45	No	44513-PV	200 Pack
30	0.2	Yes	42225-PV	100 Pack
	0.45	No	44525-PV	100 Pack

Applications:

- HPLC and organic solvent sample preparation and clean up
- Dissolution sample analysis
- General sample preparation prior to analytical analysis
- Mixed sample matrix of aqueous or organic dissolved analytes

Applications:

- Filtration of aggressive organic, highly basic or hot solutions, transducer protectors
- Filter aqueous solutions after prewetting with an alcohol

Note: PTFE hydrophobic membranes require pre-treatment with alcohol before being suitable for aqueous or high aqueous/organic samples. Do not use directly with aqueous solutions.

Applications:

- Filtration of aggressive organic, highly basic or hot solutions, without the need pre-wet membrane
- Filter aqueous solutions without prewetting with an alcohol

Applications:

- General biological filtration
- Filtration of samples where high protein recovery is desired

Titan3 regenerated cellulose syringe filters

Diameter (mm)	Pore Size (µm)	Pre-Filter	Cat. No.	Quantity
4	0.2	No	52204-RC	100 Pack
	0.45	No	54504-RC	100 Pack
17	0.2	Yes	52213-RC	200 Pack
	0.45	No	54513-RC	200 Pack
30	0.2	Yes	52225-RC	100 Pack
	0.45	No	54525-RC	100 Pack

Applications:

- Low non-specific binding applications
- Tissue culture media filtration and general biological sample filtration

Titan3 PES (polyethersulfone) syringe filters

Diameter (mm)	Pore Size (µm)	Pre-Filter	Cat. No.	Quantity
17	0.2	No	42213-PS	200 Pack
	0.45	No	44513-PS	200 Pack
30	0.2	Yes	42225-PS	100 Pack
	0.45	No	44525-PS	100 Pack

Applications:

- Ion chromatography
- Tissue culture filtration, filtration of proteins and nucleic acids
- High-temperature liquids

Titan3 GMF (glass microfiber) syringe filters

Diameter (mm)	Pore Size (µm)	Pre-Filter	Cat. No.	Quantity
30	0.7	No	40725-GM	100 Pack
	1.2	No	41225-GM	100 Pack
	3.1	No	42725-GM	100 Pack

Applications:

- Dissolution testing
- General filtration

Titan3 polypropylene syringe filters

Diameter (mm)	Pore Size (µm)	Pre-Filter	Cat. No.	Quantity
17	0.2	No	42213-PP	200 Pack
	0.45	No	44513-PP	200 Pack
30	0.2	No	42225-PP	100 Pack
	0.45	No	44525-PP	100 Pack

Applications:

- Filtration of biological samples
- Filtration of aggressive organic solutions

Titan3 cellulose acetate syringe filters

Diameter (mm)	Pore Size (µm)	Pre-Filter	Cat. No.	Quantity
4	0.2	No	42204-CA	100 Pack
	0.45	No	44502-CA	100 Pack
17	0.2	No	42213-CA	100 Pack
	0.45	No	44513-CA	100 Pack
30	0.2	No	42225-CA	100 Pack
	0.45	No	44525-CA	100 Pack

Applications:

- Tissue culture media filtration, sensitive biological samples



Titan2 syringe filters

HPLC performe syringe filters

- Low extractable membranes and housing
- HPLC performance tested
- Plain polypropylene housing
- 30mm products pressure rated to 100psi
- Enhanced Luer Lock inlet which prevents leakage



Thermo Scientific™ Target2™ nylon syringe filters

Diameter (mm)	Pore Size (µm)	Pre-Filter	Cat. No.	Quantity
4	0.2	No	F2504-2	100 Pack
	0.45	No	F2504-1	100 Pack
17	0.2	No	F2513-2	100 Pack
	0.45	No	F2513-1	100 Pack
30	0.2	No	F2500-2	100 Pack
		Yes	F2502-2	100 Pack
	0.45	No	F2500-1	100 Pack
		Yes	F2502-1	100 Pack
	1.5	No	F2500-12	100 Pack
5.0	No	F2500-50	100 Pack	

Applications:

- General laboratory filtration
- Filtration for most HPLC samples

Target 2 PTFE (hydrophobic) syringe filters

Diameter (mm)	Pore Size (µm)	Pre-Filter	Cat. No.	Quantity
4	0.2	No	F2504-4	100 Pack
	0.45	No	F2504-3	100 Pack
17	0.2	No	F2513-4	100 Pack
	0.45	No	F2513-3	100 Pack
30	0.2	No	F2500-4	100 Pack
		No	F2500-3	100 Pack
	0.45	Yes	F2502-3	100 Pack
		No	F2500-13	100 Pack

Applications:

- Filtration of aggressive organic, highly basic or hot solutions, transducer protectors
- Filter aqueous solutions after prewetting with an alcohol

Note: PTFE hydrophobic membranes require pre-treatment with alcohol before being suitable for aqueous or high aqueous/organic samples. Do not use directly with aqueous solutions

Target2 PVDF syringe filters

Diameter (mm)	Pore Size (µm)	Pre-Filter	Cat. No.	Quantity
4	0.2	No	F2504-6	100 Pack
	0.45	No	F2504-5	100 Pack
17	0.2	No	F2513-6	100 Pack
	0.45	No	F2513-5	100 Pack
30	0.2	No	F2500-6	100 Pack
	0.45	No	F2500-5	100 Pack

Applications:

- General biological filtration
- Filtration of samples where high protein recovery is desired

Target2 regenerated cellulose syringe filters

Diameter (mm)	Pore Size (µm)	Pre-Filter	Cat. No.	Quantity
4	0.2	No	F2504-8	100 Pack
	0.45	No	F2504-7	100 Pack
17	0.2	No	F2513-8	100 Pack
	0.45	No	F2513-7	100 Pack
30	0.2	No	F2500-8	100 Pack
	0.45	No	F2500-7	100 Pack

Applications:

- Low non-specific binding applications
- Tissue culture media filtration and general biological sample filtration

Target2 PES (polyethersulfone) syringe filters

Diameter (mm)	Pore Size (µm)	Pre-Filter	Cat. No.	Quantity
17	0.2	No	F2513-17	100 Pack
	0.45	No	F2513-14	100 Pack
30	0.2	No	F2500-17	100 Pack
	0.45	No	F2500-14	100 Pack

Applications:

- Ion chromatography
- Tissue culture filtration, filtration of proteins and nucleic acids
- High-temperature liquids

Target2 GMF (glass microfiber) syringe filters

Diameter (mm)	Pore Size (µm)	Pre-Filter	Cat. No.	Quantity
30	0.7	No	F2500-18	100 Pack
	1.2	No	F2500-19	100 Pack
	3.1	No	F2500-20	100 Pack

Applications:

- Dissolution testing
- General filtration

Target2 polypropylene syringe filters

Diameter (mm)	Pore Size (µm)	Pre-Filter	Cat. No.	Quantity
4	0.2	No	F2504-10	100 Pack
	0.45	No	F2504-9	100 Pack
17	0.2	No	F2513-10	100 Pack
	0.45	No	F2513-9	100 Pack
30	0.2	No	F2500-10	100 Pack
	0.45	No	F2500-9	100 Pack
		Yes	F2502-9	100 Pack

Applications:

- Filtration of biological samples
- Filtration of aggressive organic solutions

Target2 cellulose acetate syringe filters

Diameter (mm)	Pore Size (µm)	Pre-Filter	Cat. No.	Quantity
4	0.2	No	F2504-16	100 Pack
	0.45	No	F2504-15	100 Pack
17	0.2	No	F2513-16	100 Pack
	0.45	No	F2513-15	100 Pack
30	0.2	No	F2500-16	100 Pack
	0.45	No	F2500-15	100 Pack

Applications:

- Tissue culture media filtration, sensitive biological samples

Choice nylon syringe filters

Diameter (mm)	Pore Size (µm)	Pre-Filter	Cat. No.	Quantity
13	0.2	No	CH2213-NN	100 Pack
	0.45	No	CH2225-NN	100 Pack
17	0.2	No	CH4513-NN	100 Pack
	0.45	No	CH4525-NN	100 Pack

Applications:

- HPLC and organic solvent sample preparation and clean up
- Dissolution sample analysis
 - General sample preparation prior to analytical analysis
 - Mixed sample matrix of aqueous or organic dissolved analytes

All-plastic disposable syringes

Disposable syringes with polyethylene barrels and polypropylene plungers; use for all syringe filter applications

- Two-part, all-plastic construction eliminates the need for rubber or synthetic plunger gaskets
- No silicone or oil lubricant is required in the barrel
- Choose Luer-Slip or Luer Lock syringes, in capacities ranging from 1 to 50mL



All-plastic disposable syringes

Capacity (mL)	Cat. No.	Quantity
Luer-Slip Syringes		
1	S7510-1	100 Pack
3	S7510-3	100 Pack
5	S7510-5	100 Pack
10	S7510-10	100 Pack
20	S7510-20	100 Pack
30	S7510-30	50 Pack
50	S7510-50	30 Pack
Luer Lock Syringes		
3	S7515-3	100 Pack
5	S7515-5	100 Pack
10	S7515-10	100 Pack
20	S7515-20	100 Pack

750µL micro-centrifugal filters, non-sterile

- Filter volumes as low as 50µL up to 750µL with low hold-up volume
- Use with any laboratory microcentrifuge
- Virgin polypropylene filter housing with tapered 2mL, capped receiver tube
- 10,000xG maximum centrifugal force



750µL micro-centrifugal filters, non-sterile

Material	Pore Size (µm)	Cat. No.	Quantity
Cellulose Acetate	0.2	F2517-1	100 Pack
Cellulose Acetate	0.45	F2517-2	100 Pack
Nylon	0.2	F2517-3	100 Pack
Nylon	0.45	F2517-4	100 Pack
PVDF	0.2	F2517-5	100 Pack
PVDF	0.45	F2517-6	100 Pack
Regenerated Cellulose	0.2	F2517-7	100 Pack
Regenerated Cellulose	0.45	F2517-8	100 Pack
PTFE	0.2	F2517-9	100 Pack
PTFE	0.45	F2517-10	100 Pack

2mL centrifugal filters, non-sterile

- Filter sample volumes up to 2mL
- Virgin polypropylene filter housing with tapered 5mL, capped receiver tube
- Use with benchtop or floor model centrifuges
- 5,000xG maximum centrifugal force



2mL centrifugal filters, non-sterile

Material	Pore Size (µm)	Cat. No.	Quantity
Cellulose Acetate	0.2	F2520-1	25 Pack
Cellulose Acetate	0.45	F2520-2	25 Pack
Nylon	0.2	F2520-3	25 Pack
Nylon	0.45	F2520-4	25 Pack
PVDF	0.2	F2520-5	25 Pack
PVDF	0.45	F2520-6	25 Pack
PTFE	0.2	F2520-7	25 Pack
PTFE	0.45	F2520-8	25 Pack

25mL centrifugal filters, non-sterile

- Filter sample volumes up to 25mL
- Virgin polypropylene filter housing with conical receiver
- Use with benchtop or floor model centrifuges
- 2,500xG maximum centrifugal force



25mL centrifugal filters, non-sterile

Material	Pore Size (µm)	Cat. No.	Quantity
Cellulose Acetate	0.2	F2519-1	50 Pack
Cellulose Acetate	0.45	F2519-2	50 Pack
Nylon	0.2	F2519-3	50 Pack
Nylon	0.45	F2519-4	50 Pack
PVDF	0.2	F2519-5	50 Pack
PVDF	0.45	F2519-6	50 Pack

For more information visit [thermofisher.com/syringefilters](https://www.thermofisher.com/syringefilters)

Index

Trademark information

The Thermo Scientific name, the Thermo Scientific logo and the following trademarks are the property of Thermo Fisher Scientific Inc. and/or its subsidiaries:

Acclaim	FocusLiner	Micro+	Snap-It
Accucore	GFM Pro	MicroBead	SOLA
Aquasil	GLD Pro	MicroSert	SureStop
AVCS	GlycanPac	Micro-V	Synchronis
BetaBasic	GOLD	Mininert	Target
BetaMax	HOT POCKET	MSQ	Target2
BETASIL	Hypercarb	Nanobore	Target Colorband
BioBasic	HyperREZ	nanoViper	Target DP
BioLC	HyperSep	National	Thermo Scientific
GuardGOLD	Hypersil	NeverVent	Titan3
Chromacol	Hypersil GOLD	OmniPac	TRACE TraceGOLD
Chromacol Gold	Hypersil GOLD aQ	Orbitrap	TracePLOT Transcend
Chromeleon	HyPURITY	PepMap	Trinity
Chromseal	HyPURITY ADVANCE	PepSwift	TriPlus
Click-On	HyPURITY Aquastar	Pierce	TriPlus RSH
COOL POCKET	I-D	Plate+	TSQ
Core Enhanced Technology Corona	Integral	PolarisQ	Tuf-Bond
Crimpmate	IonPac	Polyspring	UltraFast
Defender	IonSwift	PolyVial	UNIFILTER
DELTABOND	ISQ	ProPac	UNIGUARD
Dionex	Javelin	ProSwift	Vanquish
DNAPac	Kappa	Reacti-Block	Vari-Clean
DNASwift	LinerGOLD	Reacti-Therm	Verify
EASY-Column	LTQ FT	Reacti-Vap	Viper
EASY-Spray	LTQ Velos	Reacti-Vial	Virtuoso
Exactive	LTQ XL	Retain	WebSeal
FOCUS	MABPac	SCI-VI	
	MacroVial	SMART Digest	

The following brands, trademarks or service marks are the property of the listed company and/or its subsidiaries. Every effort has been taken to ensure this list is accurate at the time of printing this catalog.

Trademark	Owner
Aeris	Phenomenex, Inc
Agilent	Agilent Technologies, Inc
Agilent Technologies	Agilent Technologies, Inc
Alltima	Merc, Inc.
Altex	Beckman Coulter
Aminex	Bio-Rad Laboratories, Inc
Ascentis Express	Merc, Inc
ASTM	ASTM International
Atlantis	Waters Corporation
BAKERBOND	Mallinckrodt Baker, Inc.
Beckman Coulter	Beckman Coulter
Bio-Inert	Pall Corporation
Bond Elut	Agilent Technologies, Inc
Bottom-of-the-Bottle	Merc, Inc
Capcell	Shiseido
Carbowax	Dow Chemical Company
Cellosolve	Dow Chemical Company
Cheminert	Victrex plc
ChloroFiltr	United Chemical Technologies
CHROMABOND	Macherey-Nagel
Clean-Up	United Chemical Technologies
CLICK-ON	Scientific Glass Technology
Combi-Pal	LEAP Technologies, Inc.
Cortecs	Waters Corporation
CP-PoraBOND U	Waters Corporation
CP-PoraPLOT	Waters Corporation
CP-Select	Waters Corporation
CP-Sil	Waters Corporation
CTC	LEAP Technologies, Inc.
Discovery	Gilson Inc.
Discovery	Merc, Inc
eVol	Trajan Scientific Australia Pty Ltd
EVOLUTE	Biotage AB
Florisil	U.S. Silica Holdings Inc.
Gemini	Phenomenex, Inc
Genesis	Merc, Inc
Gilson	YMC Ltd.
GOAL	Dow AgroSciences
Halo	Advanced Materials Technology

Trademark	Owner
Hamilton	Hamilton Company
Hitachi	Hitachi, Ltd.
HP	Hewlett-Packard Development Company
Inertsil	GL Sciences, Inc
IntegraFrit	New Objective, Inc
ISOLUTE	Biotage AB
Jasco	Jasco, Inc.
J'Sphere	YMC CO., LTD
Jupiter	Phenomenex, Inc
Kel-F	3M
Kinetex	Phenomenex, Inc
Knauer	Knauer
Kromasil	AkzoNobel
Leap	Leap Technologies, Inc
LiChrospher	Merck
Luer-Lok	Becton Dickinson
Luna	Phenomenex, Inc
Merlin	Merlin Instrument Company
Merlin Microseal	Merlin Instrument Company
MP35N	SPS Technology
NUCLEODUR	Macherey-Nagel
Nucleoshell	Macherey-Nagel
Nucleosil	Macherey-Nagel
Oasis	Waters Corporation
Parker	Parker Hannefin Corporation
PE	PerkinElmer
PEEK (Scientific Systems)	Victrex plc
PEEKsil	SGE Analytical Science
PerkinElmer	PE Corp.
Phenomenex	Phenomenex, Inc
PicoFrit	New Objective
Pinnacle	Restek Corporation
Polar Plus	Mallinckrodt Baker, Inc
Poroshell	Agilent Technologies, Inc
Primesep	SIELC Technologies
Prodigy	Phenomenex, Inc
Purospher	Merc, inc
RheBuild	Waters Corporation
RheFlex	Rheodyne LLC
Rheodyne	Rheodyne LLC
SampliQ	Agilent Technologies, Inc
Sep-Pak	Waters Corporation

Trademark	Owner
Septa BTO	Chromatography Research Supplies
Shimadzu	Shimadzu
Shodex	Showa Denko
Shortix	Scientific Glass Technology Exploitatie B.V
SilFlow	SGE Analytical Science
SilTek	Silcotek
SilTite	SGE Analytical Science
Spherisorb	Waters Corporation
SSI	Scientific Systems
Strata	Phenomenex, Inc
Styre Screen	United Chemical Technologies
SunFire	Waters Corporation
Sunshell	ChromaNik
Supelclean	Supelco, Inc
Supelco	Merc, Inc
Supelcosil	Supelco, Inc
Super Clean	Scientific Glass Technology Exploitatie B.V
Symmetry	Waters Corporation
Synergi	Phenomenex, Inc
Teledyne/Tekmar	Teledyne Tekmar Company
Tosoh	Tosoh Corporation
TRITON X-100	Dow Chemical Company
TSKgel	Tosoh Corporation
Valco	Valco Instruments
Velcro	Velcro Industries
Vespel	DuPont de Nemours, Inc.
Viva	Restek Corporation
VOCOL	Merc, Inc
Vydac	Millipore
Waters	Waters Corporation
Waters Corp.	Waters Corporation
WISP	Waters Corporation
Xbridge	Waters Corporation
XCHANGE	SGE Analytical Science
Xterra	Waters Corporation
YMCbasic	YMC, Inc
YMC-Pack	YMC, Inc
Zorbax	Agilent Technologies, Inc
μ-Bondapak	Waters Corporation

Resources for chromatographers



Chromatography resource center

Our web-based resource centers provide technical support, applications, technical tips and literature to help move your separations forward.

For more information visit: thermofisher.com/chromatography



Technical support

For support, please visit our website: thermoscientific.com/chromexpert



How to order

USA and Canada

800 332 3331
865 354 4616 fax
chromatography@thermofisher.com

France

+33 (0)1 60 92 48 00
+33 (0)1 60 92 49 00 fax
consommableslcgcf@thermofisher.com

Germany

+49 (0) 2423 9431 -20 or -21
+49 (0) 6103 408 1640 fax
lcgc.consumables.DE@thermofisher.com

United Kingdom

+44 1928 534110
+44 1928 534001 fax
lcgc.consumables@thermofisher.com

China

800 810 5118 (free domestic call only)
400 650 5118 (free domestic call only)
+86 21 68654588
sales.china@thermofisher.com

India

+91 22 6716 2200/ 2240
+91 27 1766 2351
+91 22 6716 2244 fax
chromconsumables.in@thermofisher.com

Japan

0120-753-670 (free domestic call only)
0120-753-671 fax (domestic only)
analyze.jp@thermofisher.com

Korea

+ 82 (2) 3420-8600
+ 82 (2) 3420-8688 fax
Info.CMD.Korea@thermofisher.com

SEA

CCS.SEA@thermofisher.com

Taiwan

+886 2-8751-6655
CCS.TW@thermofisher.com

Thermo Fisher Scientific Australia Pty Ltd

1300 735 292 (free call domestic)
1800 067 639 fax
AUinfo@thermofisher.com

Thermo Fisher Scientific New Zealand Ltd

0800 933 966 (free call domestic)
0800 329 246 fax
NZinfo@thermofisher.com

All Other Enquiries

+44 (0) 1928 534 050
+44 (0) 1928 534 049 fax
salesorders.columns.uk@thermofisher.com

Find out more at

thermofisher.com/chromatographyconsumables

ThermoFisher
SCIENTIFIC