



Automate sample handling workflow

Easily program the TriPlus RSH Autosampler for integrated sample preparation

Overcome the challenges of sample preparation

When gas chromatography (GC) or gas chromatography mass spectrometry (GC-MS) analysis is performed, several manual procedures are required in the laboratory to prepare the sample prior to the injection, with the purpose of making it amenable to GC analysis, or to increase sensitivity through analytes enrichment, or simply to prepare standard solutions for instrument calibration.

Sample preparation normally involves multiple steps such as extraction, clean up, dilution, standard addition, derivatization, mixing and heating. More than 60% of the time spent in a chromatographic analysis can be dedicated to sample preparation.

Additionally, about 30% of possible sources of analytical error are due to manual sample handling (i.e., sample loss and/or sample contamination), with significant consequences on the analytical data accuracy and precision.

The Thermo Scientific™ TriPlus™ RSH Autosampler is a robotic autosampler platform capable of combining highly versatile sample introduction with automated sample preparation procedures. The typical bottle-neck of GC and GC-MS analytical workflows can be eliminated by this autosampler through fully unattended operations. Basic and advanced sample preparation procedures can be achieved by batching samples before the GC analysis or sequentially by optimizing the overall cycle time through overlapping capabilities.

Advantages of sample handling automation:

- Higher sample throughput
- Improved data repeatability
- Increased laboratory efficiency by unattended routine operations
- Reduced cost per sample

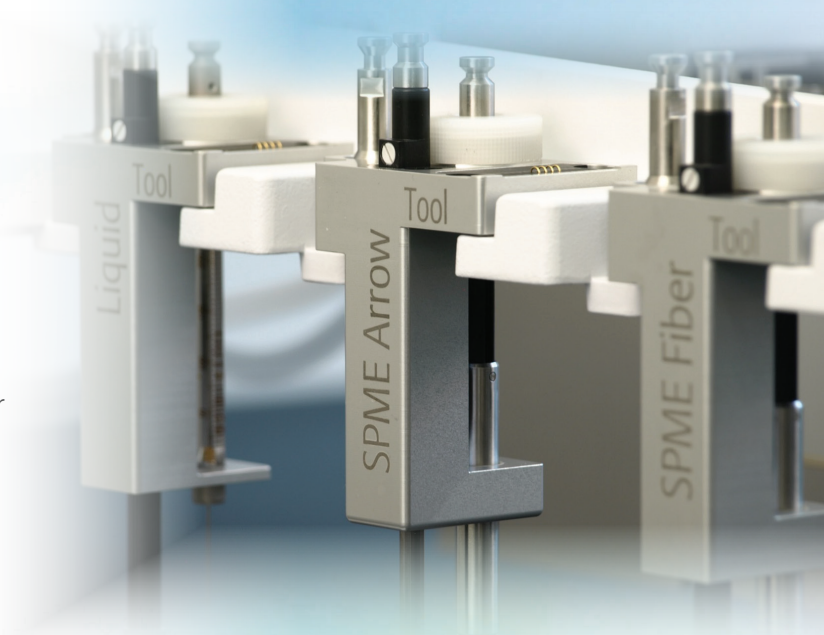
- ▶ TriPlus RSH Autosampler with Thermo Scientific™ ISQ™ 7000 Single Quadrupole GC-MS System coupled to Thermo Scientific™ TRACE™ 1310 Gas Chromatograph



Error-free sample handling

The Automatic Tool Change (ATC) provides the foundation for automated basic and advanced sample handling and sample preparation procedures. The automatic selection of the suitable tool permits different injection techniques like liquid, static and dynamic headspace, and solid phase microextraction (SPME) to be executed within the same sample sequence in a fully unattended way. Up to 6 different tools can be programmed for extended sample preparation capabilities. With that, different liquid syringes can be dedicated to specific operations like standard addition or dilution, minimizing possible cross contamination.

Several tools are available to reliably automate the most common sample preparation procedures and to achieve the highest level of sample handling flexibility. Combined with high sample capacity, the TriPlus RSH autosampler overcomes stringent productivity requirements.



Gain control of your TriPlus RSH Autosampler

Let the robotic capabilities of the TriPlus RSH autosampler perform daily sample preparation workflow – from samples and standards dilution up to more complex derivatization protocols – automatically and reliably.

Actions such as sequential dilution, calibration dilution, standard addition, batch and sequential sample derivatization, heating/mixing and vortexing are now at your fingertips to easily create your automated workflow.

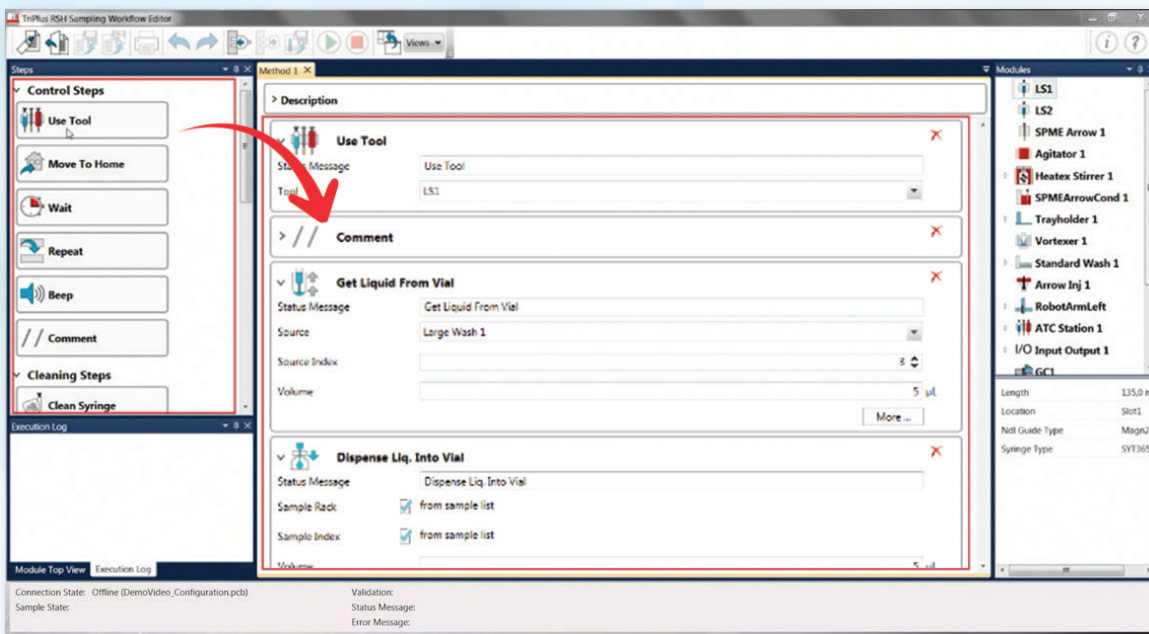
Ready-to-use PrepCycles are pre-compiled set of basic operations to go beyond standard injection functions and are available within the TriPlus RSH autosampler as a default. Additional dedicated PrepCycles can be developed on-demand by the factory to satisfy specific requirements. And now you can gain extra control of your autosampler for user-programmable workflows that very easily fulfill routine sample handling needs.



Easily instruct the TriPlus RSH autosampler to perform daily sample handling operations for you, in a fully automated way, with the Thermo Scientific™ TriPlus™ RSH Sampling Workflow Editor software.

Simply connect the Sampling Workflow Editor software to the TriPlus RSH autosampler and all the configured tools will be automatically recognized. Then, you can play with all the actions compatible with your tools, through an easy drag-and-drop approach, to program your own sample preparation workflow.

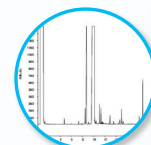
▶▶ Visit www.thermofisher.com/SamplingWorkflowEditor to view the video demonstration.



Sequential dilution



Calibration dilution with internal standard



Automated derivatization and internal standard addition



Incubator for mixing and derivatization



Vortex mixer utilizing different vial sizes

Sequential Dilution

A high concentration standard is automatically diluted to easily meet your requirements.

Calibration Dilution

Reliability and precision for your quantitative calibration. Prepare calibration levels with or without internal standards.

Standard Addition

Add increasing amounts of standard to any sample. Calibrating by standard additions is commonly used in headspace and SPME analyses. The accurate addition of standards is now a reliable, automated step in the measurement cycle.

Sample Derivatization

Derivatization steps for repeated batches of up to six samples or sequentially for immediate injection to prevent sample degradation.

Heating/Mixing

Vials undergo automatic agitation after the addition of standard volumes. You can also speed-up headspace and SPME applications by reaching the equilibrium faster.

Vortexing at ambient temperature

Physical vortexing for thorough mixing can be used for liquid homogenization and extraction steps with solvents.

Ambient temperature Headspace*

Perform static headspace injection skipping the incubation step, for temperature sensitive samples.

Ambient temperature SPME*

Perform SPME injection skipping the incubation step, for temperature sensitive samples.

**only available through PrepCycle scripts*

▶ TriPlus RSH Sampling Workflow Editor user interface. Intuitive visual programming of your autosampler through drag-and-drop motion.

Boost sample preparation in food analysis

Fatty Acid Methyl Esters (FAME)

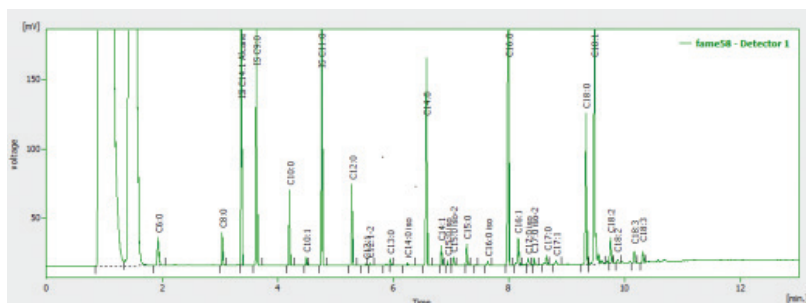
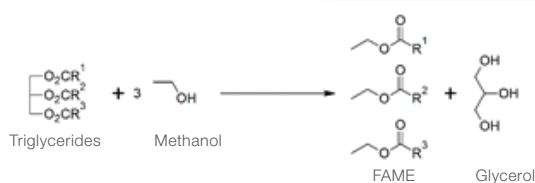
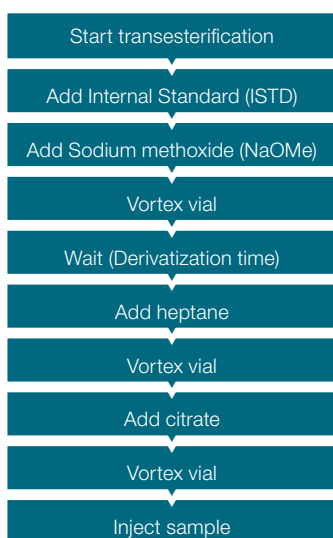
Fatty acid profiling is a key analytical determination for the food industry, impacting several segments like quality control, nutritional labeling, food design as well as vegetable oils blending and counterfeit assessment.

Transesterification protocol can be fully automated to get a 90 second per sample derivatization method for the TriPlus RSH autosampler, increasing productivity and preventing humans' exposure to hazardous chemicals.

A dilutor module is used to dispense reagents and for intermediate washing steps with methanol and water, while the vortex mixer guarantees rapid mixing.

- ✓ Biodiesel quality assessment
- ✓ Fat content in food
- ✓ Trans fatty acids
- ✓ Polyunsaturated fatty acids (PUFA) in fish oils

Rapid transesterification workflow

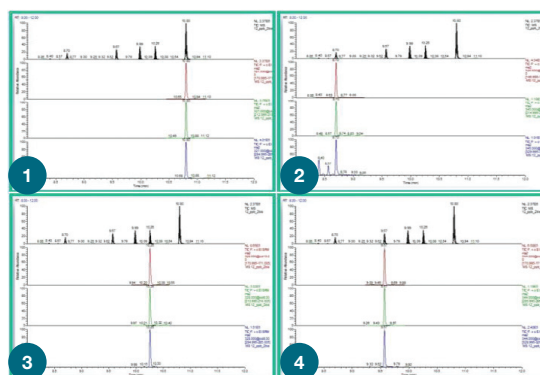
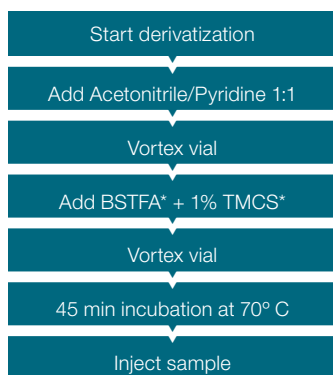
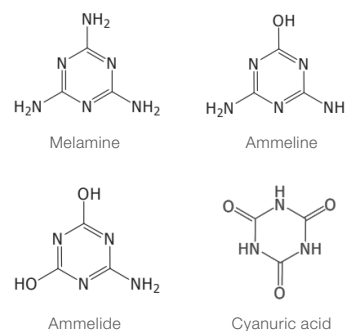


▲ Typical result of butter FAMEs. Complete GC separation within 11 minutes.

Melamine and its derivatives in dairy products

Melamine and cyanuric acid are inexpensive, nitrogen rich compounds which can be used as adulterants in food and/or feed to increase their market value by increasing their protein content. Milk and dairy products are particularly prone to such adulteration, this way impacting also the processed food containing dairy-based ingredients.

Following the sample extraction, which is performed according to the United States Food and Drug Administration (U.S. FDA) protocol, the TriPlus RSH autosampler can automate the derivatization procedure, with subsequent injection into the GC-MS/MS system. This approach improves the laboratory throughput with excellent analytical performance.



◀ SRM results for the compounds screened. (1) Melamine, (2) Cyanuric Acid, (3) Ammeline, (4) Ammelide.

*N,O-Bis(trimethylsilyl)trifluoroacetamide (BSTFA), trimethylchlorosilane (TMCS)

Thermo Scientific chromatography consumables are designed to complement our innovative range of GC and GC-MS systems together with our autosamplers. Get the most out of the TriPlus RSH autosampler by pairing it with advanced, high-performance Thermo Scientific products.



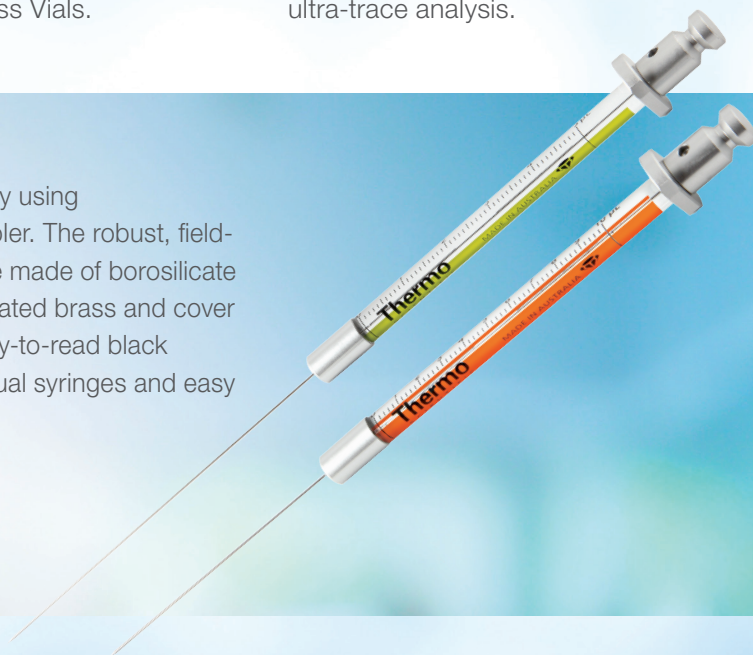
► **Learn more about Chromacol GOLD-Grade Inert Vials**

Have you ever thought about the quality of your glass vial? Especially when you need to detect small concentrations or certain structures of analytes, it's important to preserve your sample integrity right from the start with vials. For your sample preparation workflow, maximize your sample performance and lessen the number of failed assays with Thermo Scientific™ Chromacol™ GOLD-Grade Inert Glass Vials.

These vials offer the most state-of-the-art technology in the industry for the analysis of critical low detection limit analytes, and when sample quality, reproducibility, security, and integrity are of utmost importance. For easier sample handling and less risk of sample loss, the Chromacol GOLD-Grade Inert Vials are the best-in-class choice for all chromatography users performing ultra-trace analysis.

Achieve accurate, precise, and reproducible injections easily using Thermo Scientific™ GC Syringes for TriPlus RSH Autosampler. The robust, field-proven designs are optimized for septum piercing. They are made of borosilicate glass with metal flanges of either stainless steel or nickel-plated brass and cover a range of volumes. Syringes are provided with a clear, easy-to-read black scale, which aids in consistent delivery of samples for manual syringes and easy identification of installed autosampler syringes.

► **Learn more about GC Syringes**



The wide range of vials, septa, capillary columns and accessories offers application-focused solutions that are ideal for pharmaceutical, forensics/toxicology, environmental, food analysis, petrochemical and general analytical industries.

Find out more at

thermofisher.com/TriplusRSH

ThermoFisher
SCIENTIFIC